



Deanery Statistics

Compiled August 2009

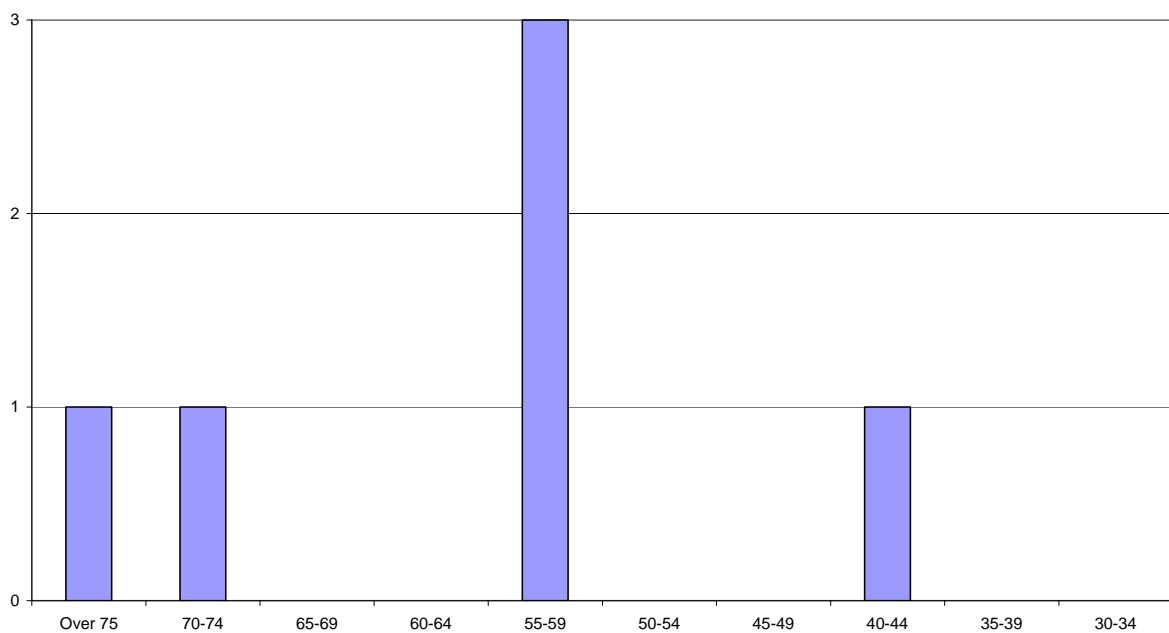
The following statistics were compiled by Mgr Richard Moth during August 2009. The data gives an overall picture of mass attendance, reception of the sacraments and provision of priests in three-year periods from 1993 to 2008. The data is arranged by deanery.

Cathedral Deanery

Clergy Provision

	1993	2008
Parishes in Deanery	11	11
Parishes served by Diocesan Clergy	8	5
Parishes served by Religious	3	5
Parishes served by Secular Clergy of other dioceses	0	1
Diocesan Clergy appointed as Assistants	2	1
Priests from Religious Orders/Other Diocese as Assistants in Diocesan Parishes	1	1
Priests serving as dedicated Chaplains	1	2
Number of Parishes with Deacons	0	2
Number of Deacons in the Deanery	0	2
Number of Listed Churches in the Deanery	Not available	4

Cathedral Deanery - Diocesan Priests by Age Group



Summary of Sacramental Figures

	1993	2008
Baptisms	470	450
Receptions	36	15
Confirmations	277	102
Marriages	79	34
Mass Attendance	4238	4942

Sacramental Figures in Detail

Cathedral	Baptisms	Receptions	Confirmations	Marriages	Mass Attendance
1993	106	0	149	25	841
1996	114	5	55	14	797
1999	71	4	27	11	878
2002	70	2	31	7	974
2005	150	7	120	7	1012
2008	93	4	43	8	1557
Bermondsey Dockhead	Baptisms	Receptions	Confirmations	Marriages	Mass Attendance
1993	29	5	13	8	341
1996	23	5	12	7	479
1999	29	1	1	2	393
2002	19	0	0	1	368
2005	24	10	10	6	412
2008	15	0	0	4	449
Bermondsey Melior St	Baptisms	Receptions	Confirmations	Marriages	Mass Attendance
1993	60	0	5	5	260
1996	42	3	13	2	258
1999	72	2	32	6	286
2002	55	0	47	2	293
2005	34	1	49	4	433
2008	49	0	2	5	465
Bermondsey South	Baptisms	Receptions	Confirmations	Marriages	Mass Attendance
1993	31	4	26	1	320
1996	26	8	8	0	330
1999	22	0	14	0	242
2002	22	1	1	1	287
2005	27	2	15	1	279
2008	10	0	11	0	253

Borough	Baptisms	Receptions	Confirmations	Marriages	Mass Attendance
1993	16	0	1	1	230
1996	14	0	1	3	250
1999	11	1	1	1	237
2002	16	0	11	2	228
2005	15	0	0	0	227
2008	6	0	3	1	144
Kennington Park	Baptisms	Receptions	Confirmations	Marriages	Mass Attendance
1993	26	0	0	3	300
1996	25	4	4	4	280
1999	46	0	7	1	300
2002	32	0	0	0	252
2005	26	0	24	0	278
2008	17	0	0	1	295
Rotherhithe	Baptisms	Receptions	Confirmations	Marriages	Mass Attendance
1993	49	13	10	10	384
1996	33	7	20	13	435
1999	37	1	18	3	514
2002	30	0	0	1	423
2005	13	0	16	1	265
2008	30	0	0	4	232
Surrey Docks	Baptisms	Receptions	Confirmations	Marriages	Mass Attendance
1993	35	5	8	9	300
1996	35	1	6	3	382
1999	26	1	24	3	314
2002	20	0	0	0	308
2005	11	1	22	1	309
2008	11	0	0	3	254
Vauxhall	Baptisms	Receptions	Confirmations	Marriages	Mass Attendance
1993	40	6	11	6	505
1996	27	2	19	3	475
1999	31	2	13	3	482
2002	27	0	22	2	532
2005	113	4	21	5	551
2008	94	0	17	1	379

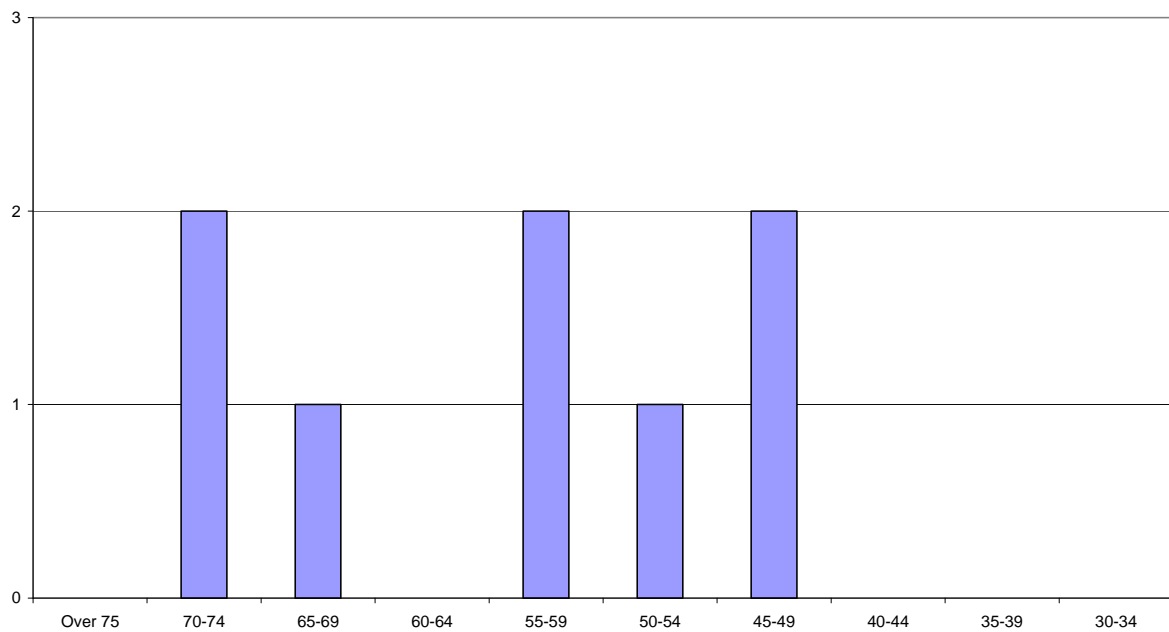
Walworth	Baptisms	Receptions	Confirmations	Marriages	Mass Attendance
1993	76	3	54	11	654
1996	123	5	21	11	604
1999	104	7	29	7	700
2002	82	0	33	2	744
2005	116	12	28	2	803
2008	124	11	26	7	805
Waterloo	Baptisms	Receptions	Confirmations	Marriages	Mass Attendance
1993	2	0	0	0	103
1996	10	2	2	2	101
1999	5	0	4	0	90
2002	6	0	0	0	72
2005	1	0	0	0	93
2008	1	0	0	0	109

Balham Deanery

Clergy Provision

	1993	2008
Parishes in Deanery	8	9
Parishes served by Diocesan Clergy	7	7
Parishes served by Religious	1	2
Parishes served by Secular Clergy of other dioceses	0	0
Diocesan Clergy appointed as Assistants	3	2
Priests from Religious Orders/Other Diocese as Assistants in Diocesan Parishes	2	5
Priests serving as dedicated Chaplains	1	1
Number of Parishes with Deacons	1	3
Number of Deacons in the Deanery	1	3
Number of Listed Churches in the Deanery	Not available	3

Balham Deanery - Diocesan Priests by Age Group



Summary of Sacramental Figures

	1993	2008
Baptisms	456	468
Receptions	20	26
Confirmations	103	160
Marriages	79	49
Mass Attendance	6388	5715

Sacramental Figures in Detail

Balham	Baptisms	Receptions	Confirmations	Marriages	Mass Attendance
1993	74	0	1	11	660
1996	61	5	0	14	680
1999	89	7	25	5	873
2002	78	1	3	7	1001
2005	64	3	20	10	1098
2008	102	6	32	17	1155
Battersea Park	Baptisms	Receptions	Confirmations	Marriages	Mass Attendance
1993	52	2	9	4	393
1996	59	0	0	3	372
1999	52	5	28	2	365
2002	18	0	17	3	431
2005	3	3	8	0	405
2008	23	2	0	0	380
Battersea West	Baptisms	Receptions	Confirmations	Marriages	Mass Attendance
1993	24	3	4	9	511
1996	35	0	0	18	490
1999	40	0	1	3	586
2002	21	0	34	3	523
2005	29	2	2	1	378
2008	32	1	28	4	433
Clapham Common	Baptisms	Receptions	Confirmations	Marriages	Mass Attendance
1993	44	2	3	8	744
1996	56	0	11	8	415
1999	28	15	0	9	408
2002	40	1	1	7	420
2005	42	0	1	5	402
2008	55	0	2	4	405

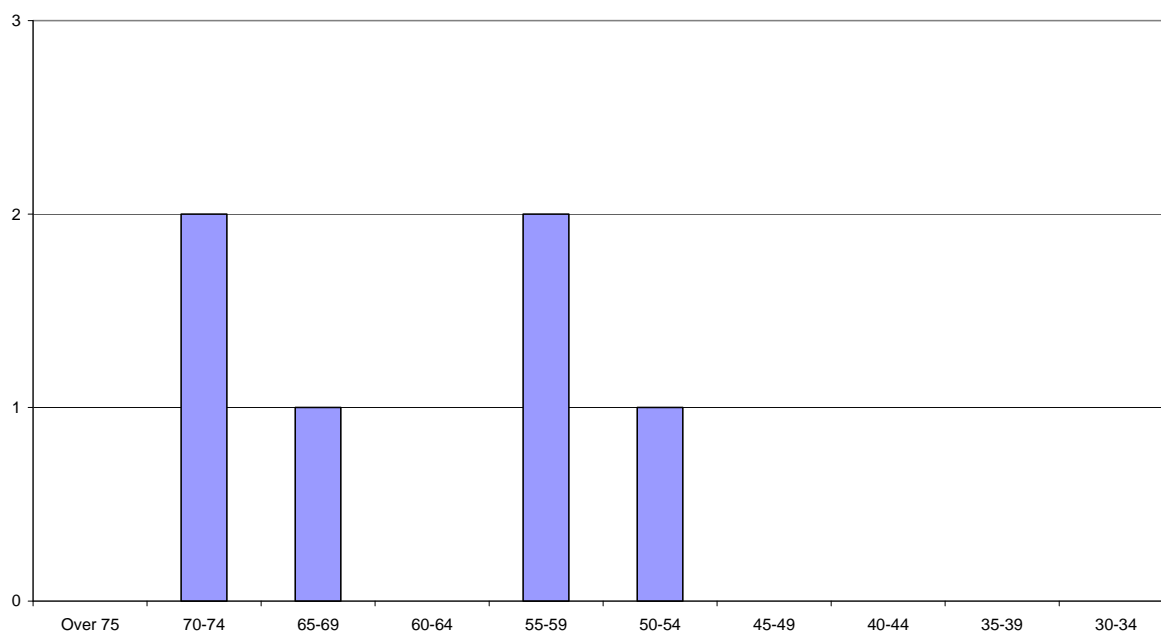
Earlsfield	Baptisms	Receptions	Confirmations	Marriages	Mass Attendance
1993	45	6	6	9	452
1996	60	1	8	6	322
1999	46	1	2	3	320
2002	16	2	12	4	241
2005	22	0	14	3	280
2008	15	0	0	1	232
Tooting	Baptisms	Receptions	Confirmations	Marriages	Mass Attendance
1993	125	4	32	27	1338
1996	110	2	50	17	1300
1999	68	0	45	17	1223
2002	61	2	39	12	1029
2005	82	2	2	7	1140
2008	73	3	28	13	1093
Tooting Bec	Baptisms	Receptions	Confirmations	Marriages	Mass Attendance
1993	52	3	26	7	1500
1996	81	4	4	4	1000
1999	62	15	32	3	1020
2002	60	16	14	9	1045
2005	55	8	33	3	1357
2008	76	10	57	6	1048
Wandsworth	Baptisms	Receptions	Confirmations	Marriages	Mass Attendance
1993	20	0	11	2	395
1996	27	0	7	5	382
1999	19	0	0	9	420
2002	22	0	3	1	450
2005	16	2	4	1	414
2008	23	1	6	1	404
Wandsworth East	Baptisms	Receptions	Confirmations	Marriages	Mass Attendance
1993	20	0	11	2	395
1996	19	0	0	0	362
1999	36	2	13	2	348
2002	29	4	4	1	371
2005	26	1	1	2	396
2008	69	3	7	3	565

Bexley Deanery

Clergy Provision

	1993	2008
Parishes in Deanery	8	8
Parishes served by Diocesan Clergy	6	6
Parishes served by Religious	2	2
Parishes served by Secular Clergy of other dioceses	0	0
Diocesan Clergy appointed as Assistants	1	0
Priests from Religious Orders/Other Diocese as Assistants in Diocesan Parishes	0	1
Priests serving as dedicated Chaplains	1	0
Number of Parishes with Deacons	1	2
Number of Deacons in the Deanery	1	2
Number of Listed Churches in the Deanery	Not available	0

Bexley Deanery - Diocesan Clergy by Age Group



Summary of Sacramental Figures

	1993	2008
Baptisms	327	304
Receptions	15	14
Confirmations	154	150
Marriages	87	30
Mass Attendance	4915	3929

Sacramental Figures in Detail

Bexley	Baptisms	Receptions	Confirmations	Marriages	Mass Attendance
1993	42	1	19	9	532
1996	53	3	3	8	525
1999	19	0	27	5	508
2002	19	0	0	4	391
2005	15	0	13	3	340
2008	9	0	0	3	380
Bexleyheath	Baptisms	Receptions	Confirmations	Marriages	Mass Attendance
1993	37	1	0	12	301
1996	17	0	23	5	300
1999	18	0	0	4	300
2002	12	0	0	4	336
2005	13	0	0	5	314
2008	25	0	23	3	292
Blackfen	Baptisms	Receptions	Confirmations	Marriages	Mass Attendance
1993	41	0	39	6	625
1996	48	0	34	3	572
1999	56	10	39	5	788
2002	55	4	47	6	693
2005	39	3	40	4	660
2008	51	2	32	2	554
Bostall Park	Baptisms	Receptions	Confirmations	Marriages	Mass Attendance
1993	22	3	3	9	499
1996	22	0	0	13	464
1999	28	0	0	6	441
2002	29	2	21	11	443
2005	36	0	24	7	423
2008	30	0	15	0	375

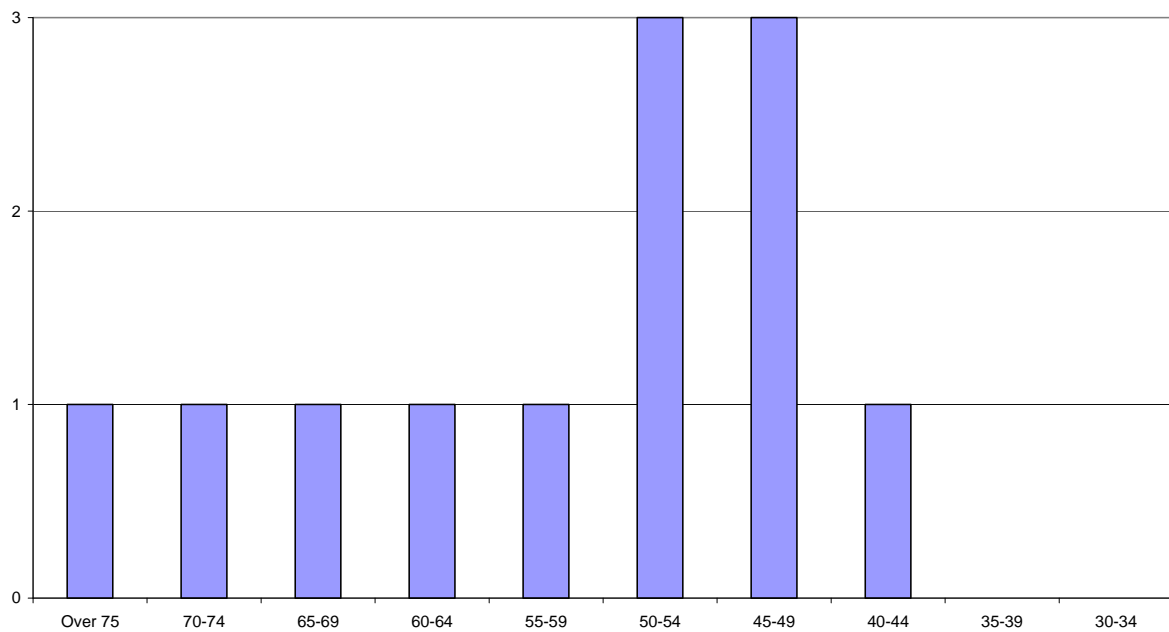
Crayford	Baptisms	Receptions	Confirmations	Marriages	Mass Attendance
1993	30	0	0	6	540
1996	30	0	7	1	502
1999	24	0	25	3	313
2002	22	3	3	4	322
2005	43	3	31	3	338
2008	20	1	1	5	338
Erith	Baptisms	Receptions	Confirmations	Marriages	Mass Attendance
1993	64	5	22	17	738
1996	55	3	43	9	735
1999	64	3	32	11	718
2002	63	7	54	18	760
2005	65	7	47	11	815
2008	75	4	39	14	693
Sidcup	Baptisms	Receptions	Confirmations	Marriages	Mass Attendance
1993	42	1	34	20	774
1996	37	2	29	14	746
1999	45	4	22	11	691
2002	60	5	22	11	574
2005	50	0	19	4	646
2008	60	4	6	3	600
Welling	Baptisms	Receptions	Confirmations	Marriages	Mass Attendance
1993	49	4	37	8	906
1996	56	2	28	2	941
1999	44	2	19	6	936
2002	50	1	42	1	769
2005	37	0	32	5	773
2008	34	3	34	0	697

Bromley Deanery

Clergy Provision

	1993	2008
Parishes in Deanery	14	13
Parishes served by Diocesan Clergy	14	11
Parishes served by Religious	0	2
Parishes served by Secular Clergy of other dioceses	0	0
Diocesan Clergy appointed as Assistants	5	1
Priests from Religious Orders/Other Diocese as Assistants in Diocesan Parishes	0	2
Priests serving as dedicated Chaplains	0	0
Number of Parishes with Deacons	3	4
Number of Deacons in the Deanery	4	7
Number of Listed Churches in the Deanery	Not available	1

Bromley Deanery - Diocesan Clergy by Age Group



Summary of Sacramental Figures

	1993	2008
Baptisms	391	393
Receptions	25	21
Confirmations	219	268
Marriages	112	72
Mass Attendance	8196	6327

Sacramental Figures in Detail

Anerley	Baptisms	Receptions	Confirmations	Marriages	Mass Attendance
1993	49	0	23	9	778
1996	52	6	26	11	687
1999	34	3	23	5	694
2002	42	0	29	5	659
2005	44	3	21	1	610
2008	41	1	33	10	546
Beckenham	Baptisms	Receptions	Confirmations	Marriages	Mass Attendance
1993	42	3	25	18	1447
1996	71	3	36	10	1288
1999	82	1	35	19	1393
2002	80	5	34	16	1293
2005	92	6	53	15	1509
2008	98	6	59	15	1306
Biggin Hill	Baptisms	Receptions	Confirmations	Marriages	Mass Attendance
1993	14	1	12	2	160
1996	12	2	2	2	180
1999	17	1	18	2	166
2002	5	3	2	0	147
2005	8	0	6	3	148
2008	11	0	0	3	148
Bromley	Baptisms	Receptions	Confirmations	Marriages	Mass Attendance
1993	53	5	33	15	1200
1996	61	5	35	12	1159
1999	67	7	40	14	1076
2002	60	1	34	6	1036
2005	50	3	44	7	973
2008	53	7	45	11	1009

Bromley Common	Baptisms	Receptions	Confirmations	Marriages	Mass Attendance
1993	12	0	0	2	136
1996	11	0	5	2	148
1999	12	0	0	2	163
2002	6	0	8	1	161
2005	6	0	0	0	158
2008	3	0	0	1	167
Chislehurst	Baptisms	Receptions	Confirmations	Marriages	Mass Attendance
1993	21	0	3	26	220
1996	21	1	1	17	230
1999	26	2	6	20	176
2002	29	0	0	21	183
2005	24	1	1	11	162
2008	25	0	16	8	162
Chislehurst West	Baptisms	Receptions	Confirmations	Marriages	Mass Attendance
1993	18	0	0	0	295
1996	7	0	1	0	249
1999	7	1	6	2	249
2002	2	0	7	0	241
2005	8	0	9	0	201
2008	9	0	0	0	181
Farnborough	Baptisms	Receptions	Confirmations	Marriages	Mass Attendance
1993	13	0	0	3	350
1996	12	0	0	2	230
1999	13	1	4	1	226
2002	13	1	1	4	234
2005	19	1	6	2	281
2008	21	0	0	0	263
Hayes	Baptisms	Receptions	Confirmations	Marriages	Mass Attendance
1993	29	5	31	12	433
1996	32	1	2	4	448
1999	14	0	0	3	308
2002	17	1	34	1	340
2005	12	0	0	2	380
2008	7	0	21	3	420

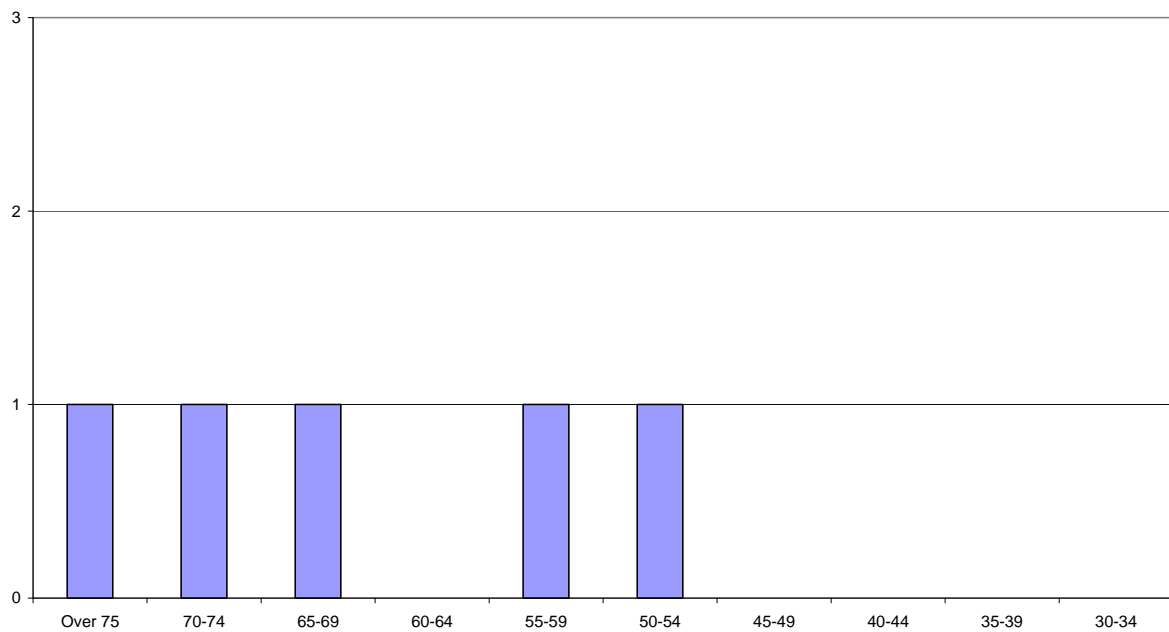
Orpington	Baptisms	Receptions	Confirmations	Marriages	Mass Attendance
1993	59	0	38	13	1147
1996	58	6	23	10	1125
1999	61	5	32	10	981
2002	43	4	19	3	854
2005	49	3	34	10	865
2008	42	0	25	11	725
Petts Wood	Baptisms	Receptions	Confirmations	Marriages	Mass Attendance
1993	19	3	3	3	789
1996	9	2	50	2	728
1999	16	0	0	5	715
2002	10	0	40	0	635
2005	6	0	0	2	712
2008	39	6	49	4	633
St. Mary Cray	Baptisms	Receptions	Confirmations	Marriages	Mass Attendance
1993	17	5	9	5	314
1996	14	1	1	3	250
1999	10	0	16	4	235
2002	13	1	1	3	220
2005	8	0	0	0	228
2008	30	1	20	3	371
St. Paul's Cray	Baptisms	Receptions	Confirmations	Marriages	Mass Attendance
1993	12	0	6	1	138
1996	13	0	0	1	114
1999	9	0	8	2	107
2002	1	0	1	0	89
2005	5	0	1	0	82
2008	Parish amalgamated with St. Mary Cray				
West Wickham	Baptisms	Receptions	Confirmations	Marriages	Mass Attendance
1993	33	3	36	3	789
1996	22	4	4	10	731
1999	28	2	47	3	704
2002	14	2	2	3	554
2005	20	0	24	2	487
2008	14	0	0	3	396

Camberwell Deanery

Clergy Provision

	1993	2008
Parishes in Deanery	7	7
Parishes served by Diocesan Clergy	6	5
Parishes served by Religious	1	2
Parishes served by Secular Clergy of other dioceses	0	0
Diocesan Clergy appointed as Assistants	5	0
Priests from Religious Orders/Other Diocese as Assistants in Diocesan Parishes	0	3
Priests serving as dedicated Chaplains	0	1
Number of Parishes with Deacons	4	2
Number of Deacons in the Deanery	5	2
Number of Listed Churches in the Deanery	Not available	1

Camberwell Deanery - Diocesan Clergy by Age Group



Summary of Sacramental Figures

	1993	2008
Baptisms	377	421
Receptions	19	35
Confirmations	159	284
Marriages	71	32
Mass Attendance	3996	4461

Sacramental Figures in Detail

Camberwell	Baptisms	Receptions	Confirmations	Marriages	Mass Attendance
1993	130	11	40	13	739
1996	131	5	51	2	637
1999	122	17	52	5	702
2002	113	6	84	4	901
2005	114	4	67	4	970
2008	124	7	101	7	1005
Dulwich	Baptisms	Receptions	Confirmations	Marriages	Mass Attendance
1993	69	2	31	30	918
1996	82	2	29	15	837
1999	70	3	35	14	841
2002	79	2	40	9	777
2005	89	6	38	6	975
2008	85	8	59	9	992
Dulwich Wood Park	Baptisms	Receptions	Confirmations	Marriages	Mass Attendance
1993	27	0	0	2	219
1996	34	0	10	2	204
1999	23	0	0	1	200
2002	29	0	6	6	181
2005	40	1	0	2	225
2008	22	2	20	4	163
Herne Hill	Baptisms	Receptions	Confirmations	Marriages	Mass Attendance
1993	19	0	0	0	235
1996	20	0	16	4	201
1999	23	0	0	1	207
2002	22	2	18	1	236
2005	30	3	5	1	288
2008	19	0	0	0	278

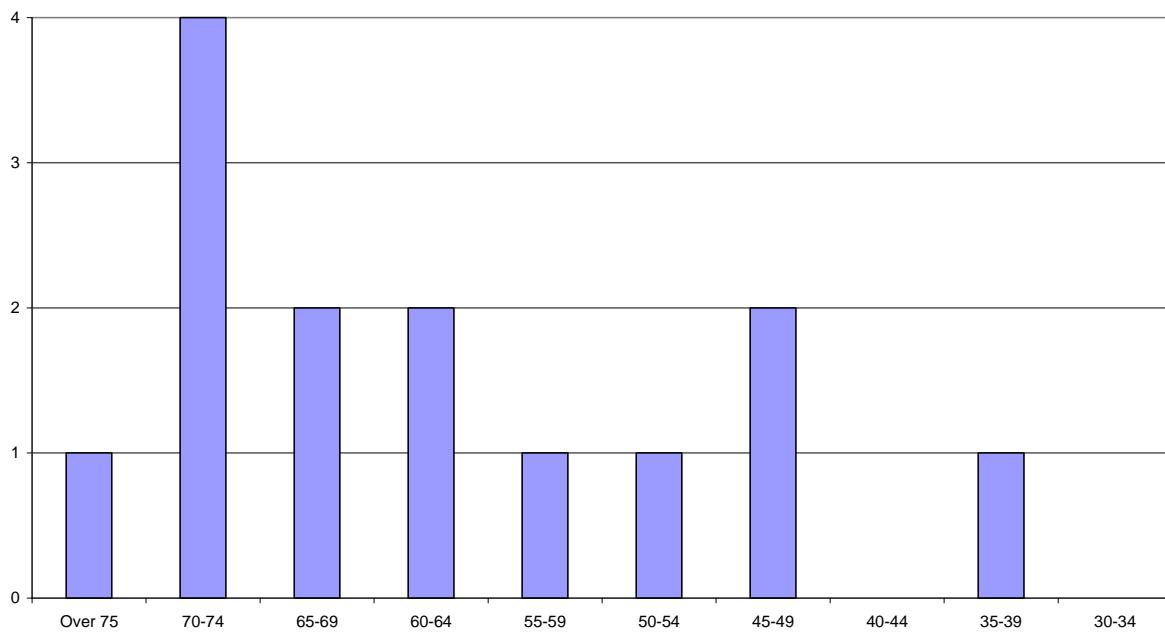
Nunhead	Baptisms	Receptions	Confirmations	Marriages	Mass Attendance
1993	63	5	16	9	614
1996	84	0	23	3	680
1999	100	1	26	7	671
2002	96	6	51	4	778
2005	79	4	63	6	769
2008	85	4	47	8	744
Peckham	Baptisms	Receptions	Confirmations	Marriages	Mass Attendance
1993	100	1	47	10	610
1996	68	1	46	6	698
1999	145	0	42	12	646
2002	180	13	49	2	822
2005	163	13	50	6	940
2008	71	10	34	3	755
Peckham Rye	Baptisms	Receptions	Confirmations	Marriages	Mass Attendance
1993	86	0	25	7	661
1996	62	0	16	8	590
1999	51	5	22	1	555
2002	33	1	22	1	500
2005	63	0	16	0	450
2008	15	4	23	1	524

Croydon Deanery

Clergy Provision

	1993	2008
Parishes in Deanery	13	13
Parishes served by Diocesan Clergy	13	12
Parishes served by Religious	0	1
Parishes served by Secular Clergy of other dioceses	0	0
Diocesan Clergy appointed as Assistants	6	2
Priests from Religious Orders/Other Diocese as Assistants in Diocesan Parishes	0	4
Priests serving as dedicated Chaplains	0	0
Number of Parishes with Deacons	2	4
Number of Deacons in the Deanery	2	5
Number of Listed Churches in the Deanery	Not available	0

Croydon Deanery - Diocesan Clergy by Age Group



Summary of Sacramental Figures

	1993	2008
Baptisms	655	658
Receptions	35	30
Confirmations	328	336
Marriages	178	78
Mass Attendance	10631	9849

Sacramental Figures in Detail

Addiscombe	Baptisms	Receptions	Confirmations	Marriages	Mass Attendance
1993	95	7	50	30	1367
1996	96	3	54	16	1383
1999	94	5	46	23	1431
2002	90	2	56	13	1370
2005	39	6	50	9	1146
2008	62	4	58	12	1132
Coulsdon	Baptisms	Receptions	Confirmations	Marriages	Mass Attendance
1993	51	2	29	7	551
1996	28	4	39	7	622
1999	38	0	39	0	672
2002	25	1	2	3	557
2005	33	2	29	3	526
2008	40	1	21	1	569
Croydon South	Baptisms	Receptions	Confirmations	Marriages	Mass Attendance
1993	42	4	31	8	880
1996	46	1	51	16	913
1999	49	2	39	10	850
2002	37	4	26	8	795
2005	38	1	37	6	759
2008	30	0	31	6	759
Croydon West	Baptisms	Receptions	Confirmations	Marriages	Mass Attendance
1993	113	7	41	28	1558
1996	116	13	40	27	1503
1999	112	2	38	11	1604
2002	86	3	95	15	1655
2005	128	5	44	13	1809
2008	126	5	19	13	1912

New Addington	Baptisms	Receptions	Confirmations	Marriages	Mass Attendance
1993	36	0	31	4	284
1996	40	1	0	3	263
1999	40	1	15	4	302
2002	25	1	15	4	227
2005	16	2	17	3	242
2008	20	0	22	2	260
Norwood South	Baptisms	Receptions	Confirmations	Marriages	Mass Attendance
1993	67	2	30	13	1028
1996	88	2	23	9	1082
1999	73	4	3	7	913
2002	61	15	50	7	1005
2005	103	7	16	9	978
2008	80	4	32	3	672
Norwood Upper	Baptisms	Receptions	Confirmations	Marriages	Mass Attendance
1993	72	2	29	19	976
1996	50	0	38	10	785
1999	38	1	30	6	621
2002	28	4	49	9	579
2005	33	0	60	4	592
2008	56	0	18	7	625
Old Coulsdon	Baptisms	Receptions	Confirmations	Marriages	Mass Attendance
1993	9	3	3	3	336
1996	10	0	0	2	309
1999	12	2	6	1	371
2002	14	1	1	1	338
2005	20	0	19	6	354
2008	11	2	2	1	308
Purley	Baptisms	Receptions	Confirmations	Marriages	Mass Attendance
1993	35	0	0	18	1095
1996	44	1	3	10	835
1999	44	6	41	11	960
2002	40	4	39	9	958
2005	38	3	44	11	1038
2008	40	6	39	20	1178

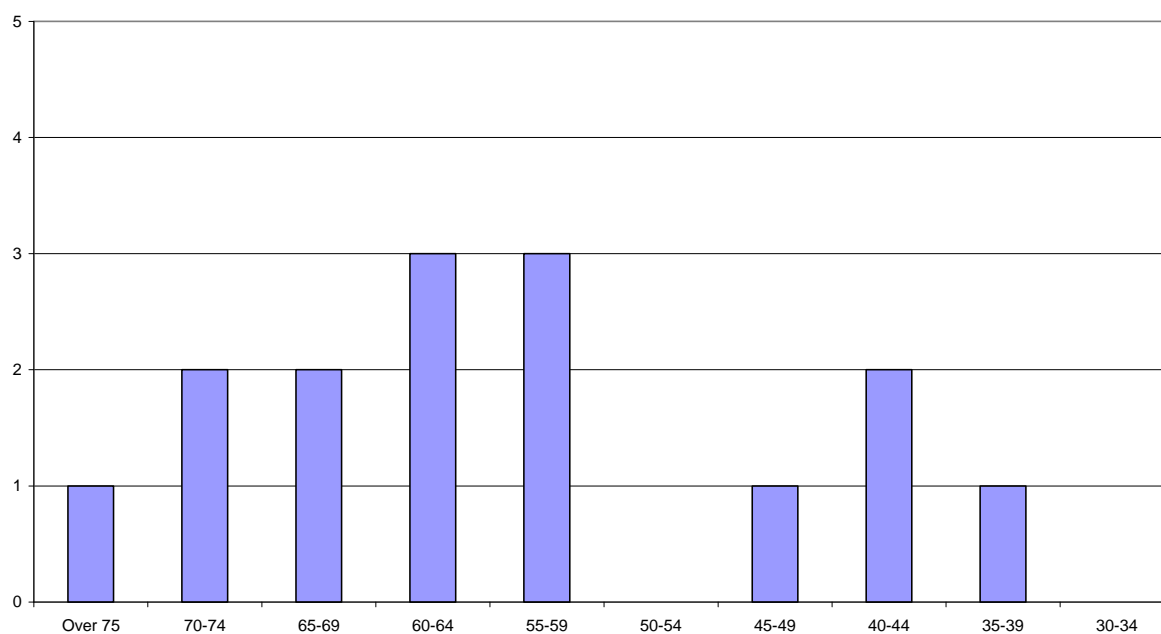
Sanderstead	Baptisms	Receptions	Confirmations	Marriages	Mass Attendance
1993	4	0	21	7	378
1996	15	1	17	3	340
1999	4	3	3	4	345
2002	16	2	2	1	319
2005	11	2	3	1	294
2008	8	1	20	1	287
Selsdon	Baptisms	Receptions	Confirmations	Marriages	Mass Attendance
1993	19	1	1	8	511
1996	30	0	26	3	502
1999	39	0	0	5	510
2002	30	0	24	7	484
2005	33	0	23	6	488
2008	25	1	17	3	450
Thornton Heath	Baptisms	Receptions	Confirmations	Marriages	Mass Attendance
1993	103	7	50	26	1333
1996	90	1	46	13	1545
1999	98	15	46	11	1486
2002	72	6	33	11	1307
2005	77	10	64	5	1335
2008	93	3	57	7	1274
Waddon	Baptisms	Receptions	Confirmations	Marriages	Mass Attendance
1993	9	0	12	7	334
1996	7	0	0	3	254
1999	8	1	9	10	271
2002	16	3	4	2	352
2005	27	0	18	7	447
2008	67	3	0	2	423

Greenwich Deanery

Clergy Provision

	1993	2008
Parishes in Deanery	16	16
Parishes served by Diocesan Clergy	15	13
Parishes served by Religious	1	3
Parishes served by Secular Clergy of other dioceses	0	0
Diocesan Clergy appointed as Assistants	0	1
Priests from Religious Orders/Other Diocese as Assistants in Diocesan Parishes	0	1
Priests serving as dedicated Chaplains	1	0
Number of Parishes with Deacons	3	2
Number of Deacons in the Deanery	3	2
Number of Listed Churches in the Deanery	Not available	3

Greenwich Deanery - Diocesan Priests by Age Group



Summary of Sacramental Figures

	1993	2008
Baptisms	495	684
Receptions	31	61
Confirmations	206	243
Marriages	98	84
Mass Attendance	5990	6683

Sacramental Figures in Detail

Abbey Wood St. Benet	Baptisms	Receptions	Confirmations	Marriages	Mass Attendance
1993	19	1	1	2	210
1996	16	2	14	1	174
1999	31	0	0	1	170
2002	69	4	17	1	165
2005	45	0	0	0	314
2008	45	4	20	2	339
Abbey Wood St. David	Baptisms	Receptions	Confirmations	Marriages	Mass Attendance
1993	13	1	1	2	301
1996	17	0	10	5	302
1999	28	2	14	2	289
2002	8	0	14	1	291
2005	26	0	9	0	314
2008	47	1	7	1	240
Blackheath	Baptisms	Receptions	Confirmations	Marriages	Mass Attendance
1993	45	2	22	19	496
1996	40	2	3	18	400
1999	45	4	19	21	428
2002	26	3	4	24	488
2005	46	7	21	17	520
2008	57	3	3	18	622
Charlton	Baptisms	Receptions	Confirmations	Marriages	Mass Attendance
1993	40	5	25	9	460
1996	39	0	16	4	466
1999	29	0	16	6	345
2002	33	1	18	1	406
2005	32	2	12	2	417
2008	24	0	14	2	361

Eltham	Baptisms	Receptions	Confirmations	Marriages	Mass Attendance
1993	65	5	30	12	1094
1996	68	6	37	15	1036
1999	66	4	53	6	1133
2002	38	4	48	5	919
2005	58	1	42	6	978
2008	55	4	49	12	948
Eltham Middle Park	Baptisms	Receptions	Confirmations	Marriages	Mass Attendance
1993	3	0	0	0	43
1996	0	1	1	1	40
1999	0	0	0	0	33
2002	Chapel Closed				
2005					
2008					
Eltham Well Hall	Baptisms	Receptions	Confirmations	Marriages	Mass Attendance
1993	42	4	31	9	394
1996	38	4	22	5	405
1999	42	2	0	11	400
2002	31	4	0	0	485
2005	37	3	18	4	515
2008	34	8	23	4	590
Greenwich	Baptisms	Receptions	Confirmations	Marriages	Mass Attendance
1993	26	0	0	15	245
1996	28	0	5	29	255
1999	59	1	0	21	265
2002	62	1	13	15	305
2005	58	3	2	23	349
2008	53	1	13	20	359
Greenwich East	Baptisms	Receptions	Confirmations	Marriages	Mass Attendance
1993	29	0	0	2	190
1996	20	0	0	0	218
1999	17	0	18	1	179
2002	14	0	0	0	228
2005	9	2	14	2	152
2008	22	2	7	4	149

Kidbrooke	Baptisms	Receptions	Confirmations	Marriages	Mass Attendance
1993	26	0	14	8	310
1996	46	0	0	2	368
1999	40	0	0	6	398
2002	25	0	0	6	452
2005	39	0	18	0	506
2008	21	1	1	5	500
Mottingham	Baptisms	Receptions	Confirmations	Marriages	Mass Attendance
1993	17	2	21	4	501
1996	28	4	4	8	453
1999	32	0	23	14	438
2002	30	0	11	4	408
2005	31	0	0	7	368
2008	33	3	3	3	344
Plumstead	Baptisms	Receptions	Confirmations	Marriages	Mass Attendance
1993	33	1	13	4	307
1996	33	1	6	2	239
1999	45	2	17	3	273
2002	34	0	6	3	313
2005	25	0	10	5	311
2008	75	9	35	6	460
Plumstead Common	Baptisms	Receptions	Confirmations	Marriages	Mass Attendance
1993	19	0	18	3	384
1996	13	0	0	0	416
1999	10	0	17	0	330
2002	0	0	0	1	330
2005	21	1	12	1	252
2008	12	0	0	0	239
Shooters Hill	Baptisms	Receptions	Confirmations	Marriages	Mass Attendance
1993	35	6	4	4	293
1996	31	0	18	2	313
1999	29	0	14	11	255
2002	26	1	9	3	254
2005	33	2	0	3	343
2008	48	3	29	4	280

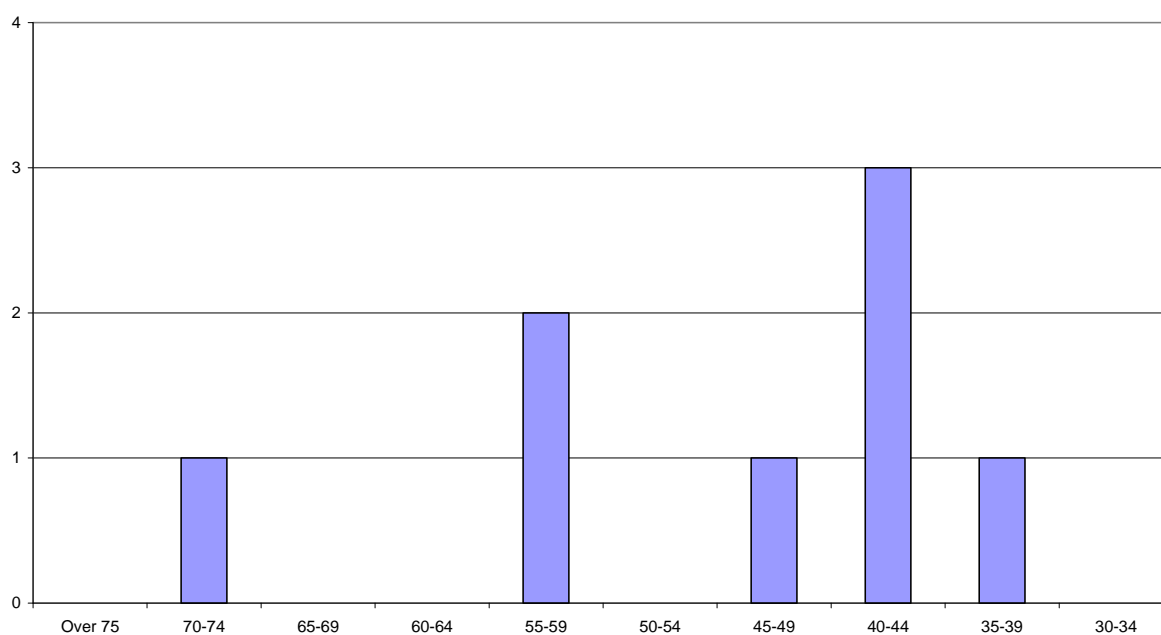
Thamesmead Central	Baptisms	Receptions	Confirmations	Marriages	Mass Attendance
1993	34	0	0	1	150
1996	27	3	3	0	148
1999	17	0	5	0	179
2002	30	0	15	2	228
2005	44	0	5	0	412
2008	8	0	11	0	374
Thamesmead South	Baptisms	Receptions	Confirmations	Marriages	Mass Attendance
1993	7	0	0	0	112
1996	14	3	10	0	95
1999	32	2	9	0	98
2002	27	1	10	0	85
2005	24	5	2	0	95
2008	23	1	7	0	101
Woolwich	Baptisms	Receptions	Confirmations	Marriages	Mass Attendance
1993	42	4	26	4	500
1996	72	11	0	7	715
1999	50	4	26	4	748
2002	60	1	9	5	796
2005	88	13	81	2	840
2008	127	21	21	3	777

Kingston Deanery

Clergy Provision

	1993	2008
Parishes in Deanery	7	7
Parishes served by Diocesan Clergy	7	6
Parishes served by Religious	0	1
Parishes served by Secular Clergy of other dioceses	0	0
Diocesan Clergy appointed as Assistants	1	2
Priests from Religious Orders/Other Diocese as Assistants in Diocesan Parishes	0	0
Priests serving as dedicated Chaplains	0	0
Number of Parishes with Deacons	2	3
Number of Deacons in the Deanery	2	4
Number of Listed Churches in the Deanery	Not available	2

Kingston Deanery- Diocesan Priests by Age Group



Summary of Sacramental Figures

	1993	2008
Baptisms	316	278
Receptions	26	24
Confirmations	118	133
Marriages	92	37
Mass Attendance	4064	4234

Sacramental Figures in Detail

Chessington & Hook	Baptisms	Receptions	Confirmations	Marriages	Mass Attendance
1993	15	0	0	5	294
1996	12	0	0	1	314
1999	25	0	12	3	345
2002	20	3	16	4	402
2005	23	0	0	4	363
2008	11	0	0	3	378
Kingston	Baptisms	Receptions	Confirmations	Marriages	Mass Attendance
1993	40	2	34	9	634
1996	40	1	18	6	616
1999	58	2	4	13	663
2002	54	0	44	7	724
2005	45	3	2	6	718
2008	50	1	24	7	702
Kingston Hill	Baptisms	Receptions	Confirmations	Marriages	Mass Attendance
1993	44	11	7	9	327
1996	60	0	10	7	215
1999	84	1	8	12	184
2002	49	0	0	3	188
2005	5	0	8	1	182
2008	16	0	9	2	177
New Malden	Baptisms	Receptions	Confirmations	Marriages	Mass Attendance
1993	42	6	6	16	783
1996	65	4	50	10	907
1999	54	6	2	6	929
2002	42	2	23	11	914
2005	41	2	44	7	908
2008	48	5	46	5	1004

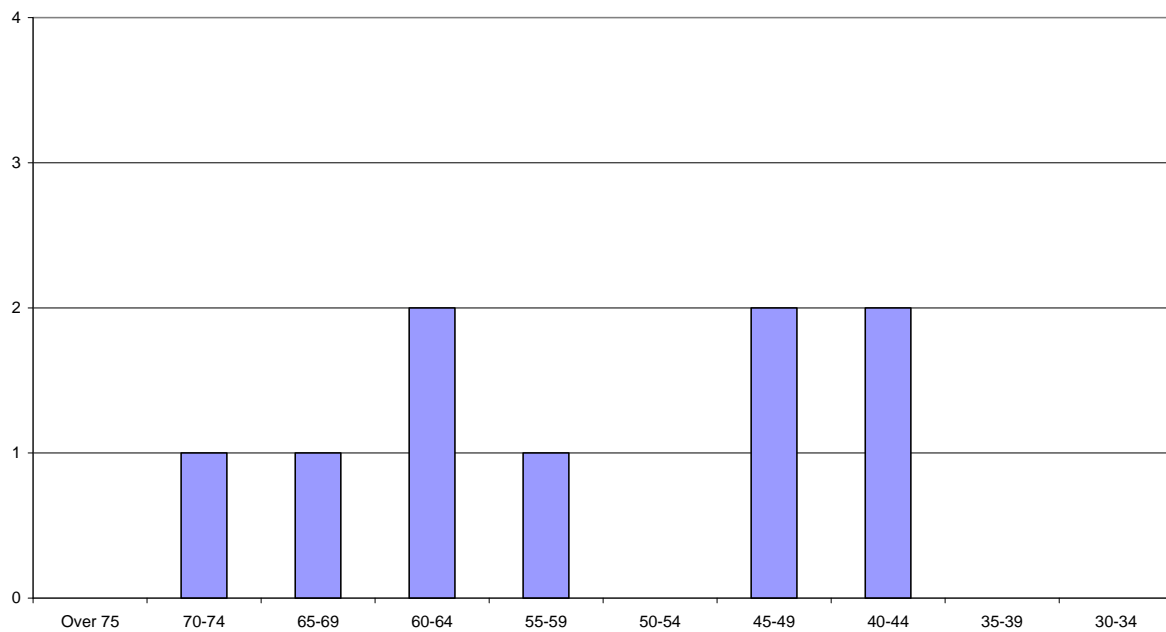
Norbiton	Baptisms	Receptions	Confirmations	Marriages	Mass Attendance
1993	12	0	0	1	290
1996	8	0	7	3	303
1999	9	0	18	1	286
2002	5	0	0	0	244
2005	12	0	13	0	323
2008	11	0	0	0	244
Surbiton	Baptisms	Receptions	Confirmations	Marriages	Mass Attendance
1993	98	0	19	41	558
1996	93	0	16	29	540
1999	73	0	0	28	451
2002	41	0	12	21	447
2005	28	0	6	19	444
2008	41	14	19	12	509
Tolworth	Baptisms	Receptions	Confirmations	Marriages	Mass Attendance
1993	65	7	52	11	1178
1996	36	11	26	7	1009
1999	73	9	51	11	986
2002	58	0	45	3	908
2005	70	1	40	11	934
2008	101	4	35	8	1220

Lambeth Deanery

Clergy Provision

	1993	2008
Parishes in Deanery	11	11
Parishes served by Diocesan Clergy	8	7
Parishes served by Religious	3	4
Parishes served by Secular Clergy of other dioceses	0	0
Diocesan Clergy appointed as Assistants	3	2
Priests from Religious Orders/Other Diocese as Assistants in Diocesan Parishes	1	0
Priests serving as dedicated Chaplains	0	0
Number of Parishes with Deacons	1	1
Number of Deacons in the Deanery	1	1
Number of Listed Churches in the Deanery	Not available	3

Lambeth Deanery - Diocesan Priests by Age Group



Summary of Sacramental Figures

	1993	2008
Baptisms	554	552
Receptions	47	43
Confirmations	242	212
Marriages	91	52
Mass Attendance	7495	7035

Sacramental Figures in Detail

Brixton	Baptisms	Receptions	Confirmations	Marriages	Mass Attendance
1993	71	6	23	9	604
1996	64	3	27	9	596
1999	71	4	27	5	536
2002	49	3	25	1	596
2005	72	2	40	4	619
2008	82	1	43	5	574
Brixton Hill	Baptisms	Receptions	Confirmations	Marriages	Mass Attendance
1993	92	7	27	10	903
1996	83	7	29	4	874
1999	106	5	29	5	767
2002	101	3	31	9	775
2005	78	6	30	5	915
2008	84	17	0	8	964
Clapham	Baptisms	Receptions	Confirmations	Marriages	Mass Attendance
1993	56	6	7	5	1256
1996	50	8	41	10	900
1999	66	3	18	17	882
2002	55	0	29	13	759
2005	68	10	39	6	946
2008	84	7	21	5	909
Clapham Park	Baptisms	Receptions	Confirmations	Marriages	Mass Attendance
1993	42	8	23	5	717
1996	49	3	14	10	642
1999	36	1	25	5	708
2002	26	1	16	4	677
2005	28	2	24	4	621
2008	23	2	13	4	639

Italian Mission	Baptisms	Receptions	Confirmations	Marriages	Mass Attendance
1993	10	0	8	3	280
1996	22	0	7	4	150
1999	32	0	2	2	150
2002	28	0	8	0	107
2005	47	0	5	3	320
2008	72	0	18	1	517
Norbury	Baptisms	Receptions	Confirmations	Marriages	Mass Attendance
1993	71	3	34	16	1400
1996	71	7	50	8	1355
1999	72	5	44	9	1415
2002	61	3	46	11	1237
2005	46	7	53	9	1216
2008	59	2	44	10	1097
Norwood West	Baptisms	Receptions	Confirmations	Marriages	Mass Attendance
1993	38	2	29	11	679
1996	36	3	32	6	708
1999	41	3	13	6	529
2002	38	5	24	7	452
2005	34	3	19	7	577
2008	40	7	25	7	549
Pollards Hill	Baptisms	Receptions	Confirmations	Marriages	Mass Attendance
1993	22	0	16	3	395
1996	29	3	0	0	416
1999	22	0	34	3	404
2002	18	2	0	0	397
2005	17	0	30	0	393
2008	21	3	30	1	373
Stockwell	Baptisms	Receptions	Confirmations	Marriages	Mass Attendance
1993	101	5	30	9	705
1996	111	9	66	15	998
1999	175	6	97	9	1178
2002	150	1	154	7	1686
2005	53	5	37	3	639
2008	26	2	9	3	486

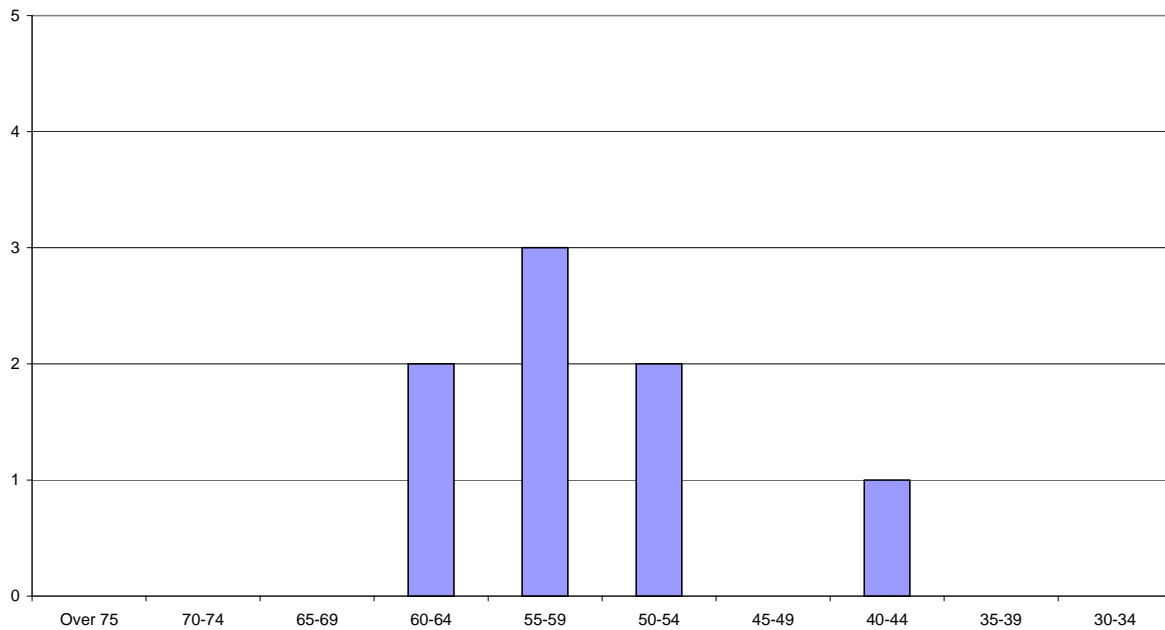
Streatham	Baptisms	Receptions	Confirmations	Marriages	Mass Attendance
1993	35	8	20	15	945
1996	54	1	21	6	774
1999	41	0	14	7	896
2002	34	1	3	4	640
2005	38	1	15	4	769
2008	46	2	9	6	676
Streatham Hill	Baptisms	Receptions	Confirmations	Marriages	Mass Attendance
1993	16	2	25	5	510
1996	25	0	13	5	401
1999	23	0	0	5	381
2002	16	0	0	4	346
2005	14	0	10	1	315
2008	15	0	0	2	251

Lewisham Deanery

Clergy Provision

	1993	2008
Parishes in Deanery	10	10
Parishes served by Diocesan Clergy	9	7
Parishes served by Religious	1	2
Parishes served by Secular Clergy of other dioceses	0	1
Diocesan Clergy appointed as Assistants	4	1
Priests from Religious Orders/Other Diocese as Assistants in Diocesan Parishes	0	1
Priests serving as dedicated Chaplains	0	1
Number of Parishes with Deacons	4	2
Number of Deacons in the Deanery	5	2
Number of Listed Churches in the Deanery	Not available	1

Lewisham Deanery - Diocesan Priests by Age Group



Summary of Sacramental Figures

	1993	2008
Baptisms	513	523
Receptions	14	31
Confirmations	187	236
Marriages	79	25
Mass Attendance	6923	5965

Sacramental Figures in Detail

Beckenham Hill	Baptisms	Receptions	Confirmations	Marriages	Mass Attendance
1993	26	0	0	1	479
1996	13	0	14	3	427
1999	16	0	0	0	355
2002	16	0	14	4	257
2005	30	3	19	1	355
2008	34	6	15	2	331
Brockley	Baptisms	Receptions	Confirmations	Marriages	Mass Attendance
1993	43	1	14	8	437
1996	42	0	19	9	465
1999	63	2	20	8	535
2002	60	3	9	2	607
2005	47	9	39	4	515
2008	56	3	18	9	424
Catford	Baptisms	Receptions	Confirmations	Marriages	Mass Attendance
1993	60	5	26	8	670
1996	35	4	27	10	600
1999	27	7	30	7	700
2002	31	5	30	1	682
2005	33	6	45	4	700
2008	32	1	30	1	660
Deptford	Baptisms	Receptions	Confirmations	Marriages	Mass Attendance
1993	85	3	6	4	573
1996	67	0	22	0	471
1999	43	0	3	3	479
2002	29	0	30	5	515
2005	61	3	36	1	472
2008	55	6	28	0	450

Downham	Baptisms	Receptions	Confirmations	Marriages	Mass Attendance
1993	36	1	23	9	500
1996	44	3	34	5	500
1999	27	4	34	5	499
2002	35	0	28	5	444
2005	17	1	24	1	484
2008	52	3	27	1	502
Forest Hill	Baptisms	Receptions	Confirmations	Marriages	Mass Attendance
1993	49	0	0	14	923
1996	42	0	48	3	823
1999	30	0	24	10	674
2002	61	3	21	13	641
2005	41	5	31	3	526
2008	36	5	26	1	500
Lee	Baptisms	Receptions	Confirmations	Marriages	Mass Attendance
1993	36	0	45	8	614
1996	33	0	0	12	556
1999	29	3	4	4	600
2002	28	2	0	3	609
2005	43	2	41	0	625
2008	33	0	25	2	603
Lewisham	Baptisms	Receptions	Confirmations	Marriages	Mass Attendance
1993	93	1	30	12	1100
1996	94	5	38	20	986
1999	110	6	35	11	1186
2002	119	9	77	17	1584
2005	121	7	60	4	1627
2008	158	5	43	3	1613
Sydenham	Baptisms	Receptions	Confirmations	Marriages	Mass Attendance
1993	61	3	27	15	1345
1996	71	1	33	9	731
1999	79	5	36	12	817
2002	54	2	41	6	654
2005	43	1	27	5	603
2008	47	1	22	4	557

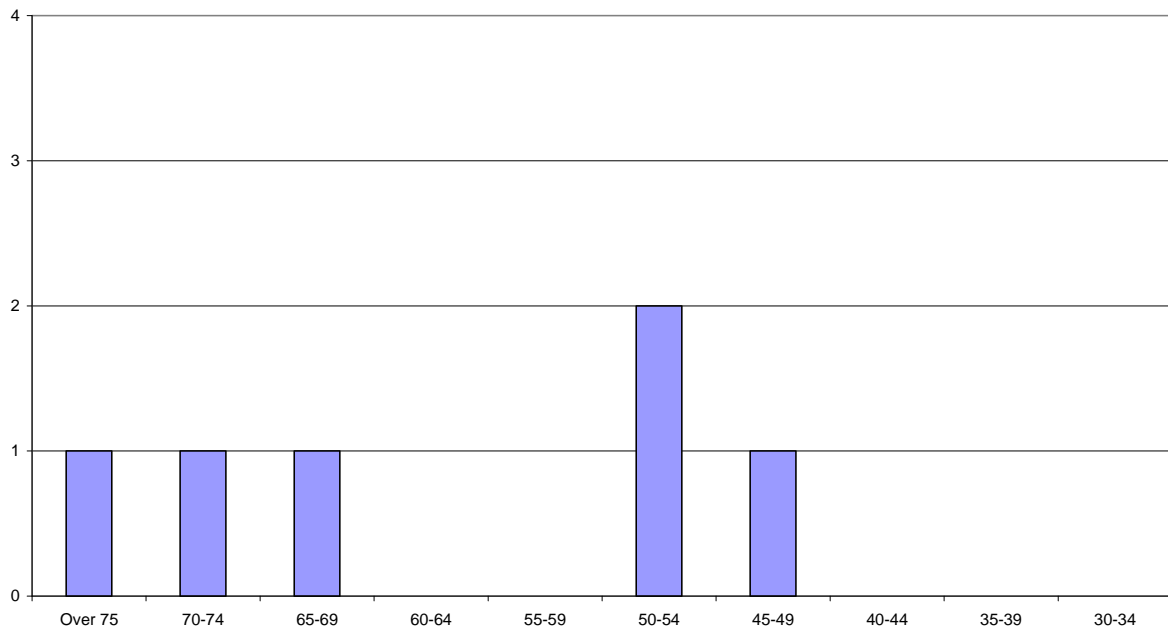
Sydenham Kirkdale	Baptisms	Receptions	Confirmations	Marriages	Mass Attendance
1993	24	0	0	0	282
1996	16	1	20	2	239
1999	26	2	3	3	302
2002	16	2	9	1	285
2005	21	0	7	1	360
2008	20	1	2	2	325

Merton Deanery

Clergy Provision

	1993	2008
Parishes in Deanery	9	8
Parishes served by Diocesan Clergy	8	6
Parishes served by Religious	1	2
Parishes served by Secular Clergy of other dioceses	0	0
Diocesan Clergy appointed as Assistants	2	2
Priests from Religious Orders/Other Diocese as Assistants in Diocesan Parishes	1	1
Priests serving as dedicated Chaplains	0	1
Number of Parishes with Deacons	4	1
Number of Deacons in the Deanery	4	2
Number of Listed Churches in the Deanery	Not available	2

Merton Deanery - Diocesan Priests by Age Group



Summary of Sacramental Figures

	1993	2008
Baptisms	383	458
Receptions	16	15
Confirmations	256	258
Marriages	116	59
Mass Attendance	6996	7091

Sacramental Figures in Detail

Colliers Wood	Baptisms	Receptions	Confirmations	Marriages	Mass Attendance
1993	15	1	2	5	280
1996	18	0	0	1	270
1999	17	1	9	3	294
2002	6	4	0	1	310
2005	8	0	14	1	310
2008	13	0	0	2	416
Merton	Baptisms	Receptions	Confirmations	Marriages	Mass Attendance
1993	44	1	63	14	1310
1996	48	5	71	9	1166
1999	56	4	70	12	1196
2002	53	1	57	9	1204
2005	48	5	55	7	1184
2008	56	4	63	13	1222
Mitcham	Baptisms	Receptions	Confirmations	Marriages	Mass Attendance
1993	61	1	40	16	766
1996	81	6	39	12	738
1999	80	3	39	12	717
2002	111	2	46	10	794
2005	80	2	49	10	863
2008	66	4	62	6	973
Morden	Baptisms	Receptions	Confirmations	Marriages	Mass Attendance
1993	93	4	31	17	873
1996	80	3	33	15	775
1999	55	10	25	11	778
2002	80	3	38	14	822
2005	66	2	44	6	890
2008	71	2	44	3	1149

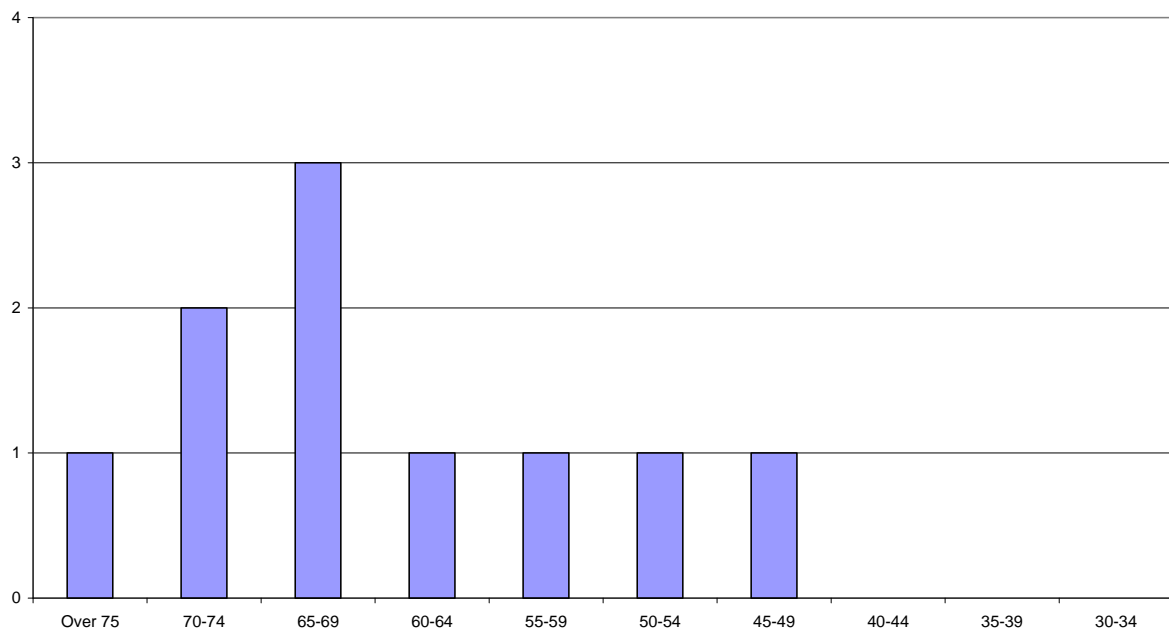
Tooting Links Road	Baptisms	Receptions	Confirmations	Marriages	Mass Attendance
1993	10	2	32	1	286
1996	12	1	1	3	273
1999	15	1	24	1	255
2002	4	0	1	1	211
2005	9	1	18	0	229
2008	2	0	0	0	182
Wimbledon	Baptisms	Receptions	Confirmations	Marriages	Mass Attendance
1993	108	6	75	50	2322
1996	123	12	71	57	2001
1999	134	3	61	57	2037
2002	110	5	39	34	1780
2005	165	6	71	41	1751
2008	175	2	63	30	1806
Wimbledon Park	Baptisms	Receptions	Confirmations	Marriages	Mass Attendance
1993	19	0	13	8	507
1996	30	0	2	5	534
1999	20	0	0	4	515
2002	26	0	10	3	445
2005	22	2	18	1	517
2008	37	2	26	2	439
Wimbledon South	Baptisms	Receptions	Confirmations	Marriages	Mass Attendance
1993	33	1	0	5	652
1996	27	1	10	11	640
1999	53	0	18	7	750
2002	34	4	0	6	817
2005	36	4	0	3	874
2008	38	1	0	3	904

Mortlake Deanery

Clergy Provision

	1993	2008
Parishes in Deanery	9	9
Parishes served by Diocesan Clergy	9	9
Parishes served by Religious	0	0
Parishes served by Secular Clergy of other dioceses	0	0
Diocesan Clergy appointed as Assistants	0	0
Priests from Religious Orders/Other Diocese as Assistants in Diocesan Parishes	0	0
Priests serving as dedicated Chaplains	1	1
Number of Parishes with Deacons	1	1
Number of Deacons in the Deanery	1	1
Number of Listed Churches in the Deanery	Not available	2

Mortlake Deanery - Diocesan Priests by Age Group



Summary of Sacramental Figures

	1993	2008
Baptisms	253	266
Receptions	6	19
Confirmations	77	101
Marriages	66	38
Mass Attendance	4635	3876

Sacramental Figures in Detail

Barnes	Baptisms	Receptions	Confirmations	Marriages	Mass Attendance
1993	24	1	1	3	420
1996	27	1	22	3	410
1999	35	1	1	2	426
2002	31	1	16	3	533
2005	26	2	2	3	454
2008	33	4	31	2	443
East Sheen	Baptisms	Receptions	Confirmations	Marriages	Mass Attendance
1993	17	0	0	3	279
1996	14	0	0	1	311
1999	9	0	0	2	264
2002	6	0	0	1	244
2005	13	1	17	1	212
2008	11	0	16	1	230
Ham	Baptisms	Receptions	Confirmations	Marriages	Mass Attendance
1993	13	0	0	2	234
1996	16	1	12	2	235
1999	20	0	0	6	216
2002	7	0	0	0	177
2005	13	0	2	2	238
2008	28	0	0	5	267
Kew	Baptisms	Receptions	Confirmations	Marriages	Mass Attendance
1993	23	0	11	8	492
1996	30	2	29	11	480
1999	36	1	1	6	476
2002	27	0	17	5	409
2005	24	0	13	6	458
2008	30	1	0	5	454

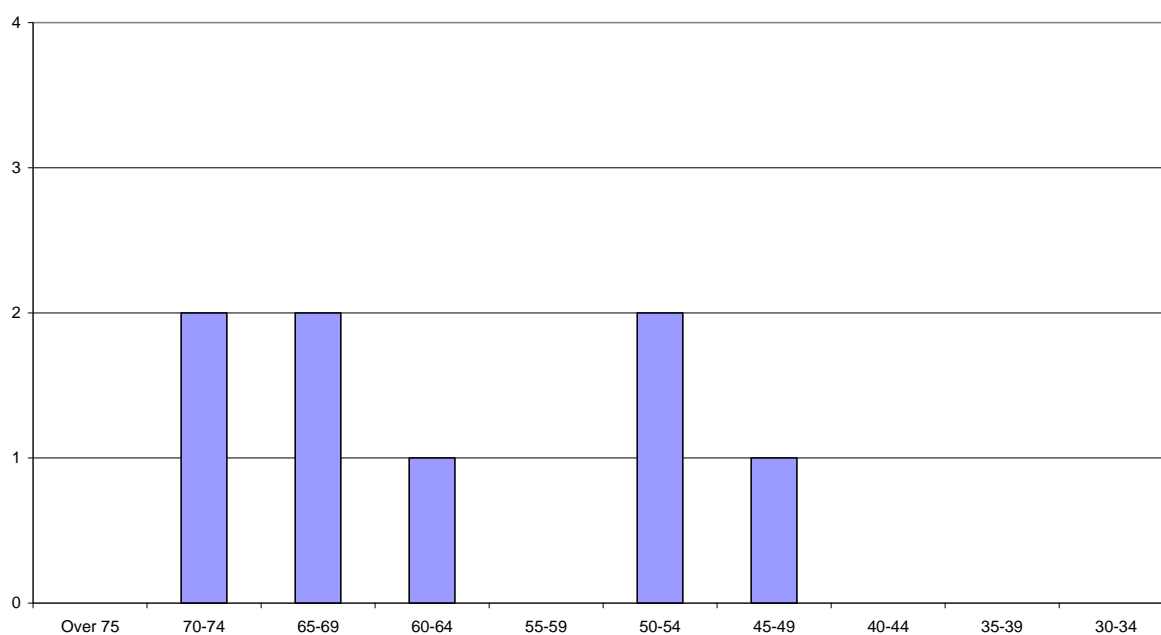
Mortlake	Baptisms	Receptions	Confirmations	Marriages	Mass Attendance
1993	22	1	1	3	373
1996	31	2	2	12	371
1999	46	1	13	7	405
2002	34	4	4	6	468
2005	29	3	9	4	501
2008	45	4	4	3	504
Putney	Baptisms	Receptions	Confirmations	Marriages	Mass Attendance
1993	37	3	25	26	1301
1996	59	0	22	17	600
1999	74	4	16	12	670
2002	40	2	18	11	704
2005	53	3	6	10	719
2008	51	6	21	11	742
Richmond	Baptisms	Receptions	Confirmations	Marriages	Mass Attendance
1993	34	0	0	8	321
1996	27	2	2	9	304
1999	24	0	0	11	331
2002	34	4	6	6	468
2005	23	0	0	6	345
2008	30	1	16	9	380
Roehampton	Baptisms	Receptions	Confirmations	Marriages	Mass Attendance
1993	62	1	23	8	786
1996	29	0	25	6	636
1999	69	1	17	13	570
2002	33	6	25	4	512
2005	36	6	11	6	707
2008	12	2	13	0	456
Wimbledon Common	Baptisms	Receptions	Confirmations	Marriages	Mass Attendance
1993	21	0	16	5	429
1996	33	3	23	3	423
1999	28	1	14	5	604
2002	22	0	32	9	509
2005	20	0	10	1	405
2008	26	1	0	2	400

Sutton Deanery

Clergy Provision

	1993	2008
Parishes in Deanery	8	8
Parishes served by Diocesan Clergy	8	8
Parishes served by Religious	0	0
Parishes served by Secular Clergy of other dioceses	0	0
Diocesan Clergy appointed as Assistants	1	0
Priests from Religious Orders/Other Diocese as Assistants in Diocesan Parishes	0	0
Priests serving as dedicated Chaplains	0	0
Number of Parishes with Deacons	0	0
Number of Deacons in the Deanery	0	0
Number of Listed Churches in the Deanery	Not available	0

Sutton Deanery - Diocesan Priests by Age Group



Summary of Sacramental Figures

	1993	2008
Baptisms	339	282
Receptions	27	22
Confirmations	98	191
Marriages	80	47
Mass Attendance	5872	5704

Sacramental Figures in Detail

Carshalton	Baptisms	Receptions	Confirmations	Marriages	Mass Attendance
1993	44	3	0	5	652
1996	59	0	34	9	657
1999	49	1	1	7	685
2002	40	3	0	7	655
2005	51	4	34	8	699
2008	63	2	0	7	695
Carshalton Beeches	Baptisms	Receptions	Confirmations	Marriages	Mass Attendance
1993	12	1	0	7	342
1996	19	0	21	7	334
1999	19	2	0	3	339
2002	15	0	29	1	310
2005	20	3	17	3	327
2008	18	4	23	1	320
Cheam	Baptisms	Receptions	Confirmations	Marriages	Mass Attendance
1993	38	3	21	7	646
1996	29	0	0	6	607
1999	33	2	33	11	609
2002	23	0	0	7	568
2005	33	1	38	6	586
2008	21	0	0	4	633
North Cheam	Baptisms	Receptions	Confirmations	Marriages	Mass Attendance
1993	41	2	17	12	579
1996	38	2	17	3	575
1999	33	6	14	3	772
2002	28	0	21	3	756
2005	26	0	0	4	837
2008	35	10	52	1	877

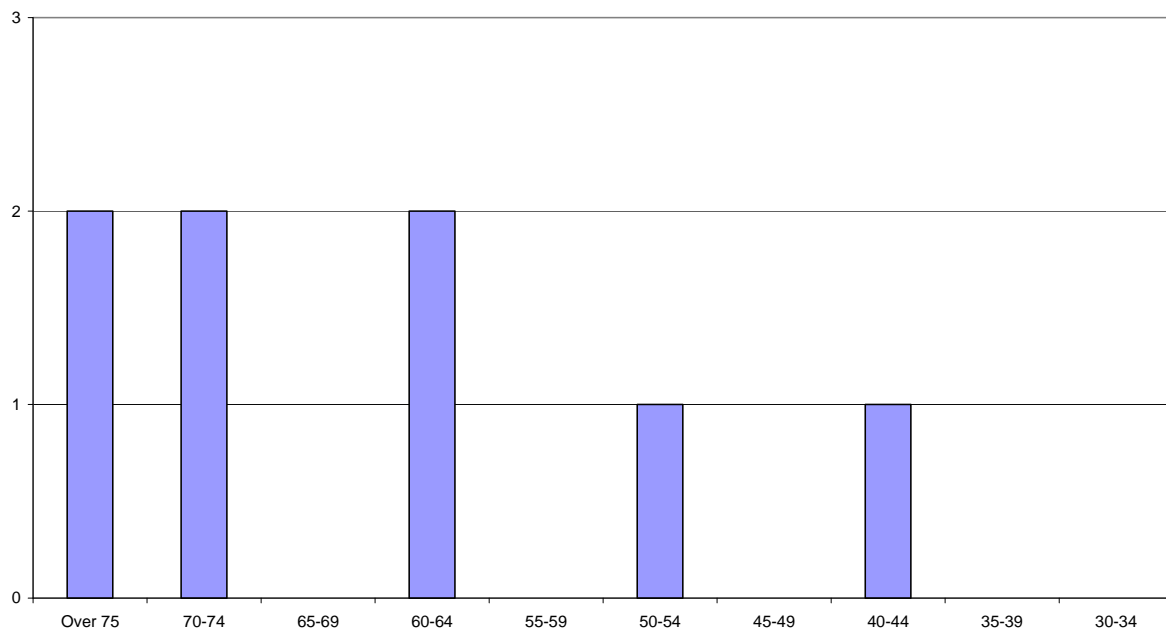
Sutton	Baptisms	Receptions	Confirmations	Marriages	Mass Attendance
1993	45	0	0	13	522
1996	44	0	1	7	493
1999	36	0	0	10	552
2002	15	1	23	5	469
2005	18	0	0	3	466
2008	18	0	30	10	497
Sutton Green	Baptisms	Receptions	Confirmations	Marriages	Mass Attendance
1993	53	1	17	5	491
1996	36	3	3	10	530
1999	39	0	22	0	475
2002	20	0	28	1	473
2005	32	0	0	0	523
2008	19	0	0	1	504
Wallington	Baptisms	Receptions	Confirmations	Marriages	Mass Attendance
1993	61	17	4	25	1690
1996	37	11	41	18	1530
1999	60	7	1	20	1249
2002	75	4	36	16	1487
2005	73	8	80	21	1469
2008	71	6	55	17	1401
Worcester Park	Baptisms	Receptions	Confirmations	Marriages	Mass Attendance
1993	45	0	39	6	950
1996	33	0	28	5	886
1999	33	0	34	5	749
2002	35	1	15	5	782
2005	36	0	0	8	802
2008	37	0	31	6	777

Canterbury Deanery

Clergy Provision

	1993	2008
Parishes in Deanery	7	7
Parishes served by Diocesan Clergy	4	5
Parishes served by Religious	3	2
Parishes served by Secular Clergy of other dioceses	0	0
Diocesan Clergy appointed as Assistants	3	3
Priests from Religious Orders/Other Diocese as Assistants in Diocesan Parishes	0	0
Priests serving as dedicated Chaplains	0	0
Number of Parishes with Deacons	3	3
Number of Deacons in the Deanery	4	4
Number of Listed Churches in the Deanery	Not available	0

Canterbury Deanery - Diocesan Priests by Age Group



Summary of Sacramental Figures

	1993	2008
Baptisms	185	162
Receptions	38	13
Confirmations	133	80
Marriages	66	30
Mass Attendance	3718	2819

Sacramental Figures in Detail

Ashford	Baptisms	Receptions	Confirmations	Marriages	Mass Attendance
1993	25	4	15	15	700
1996	16	3	28	7	766
1999	30	2	26	2	692
2002	34	2	24	4	726
2005	64	2	25	5	632
2008	41	6	31	4	679
Ashford South	Baptisms	Receptions	Confirmations	Marriages	Mass Attendance
1993	34	11	0	5	220
1996	25	1	13	3	244
1999	40	0	0	3	217
2002	9	3	22	3	239
2005	10	1	14	2	220
2008	10	0	3	2	258
Canterbury	Baptisms	Receptions	Confirmations	Marriages	Mass Attendance
1993	39	11	34	18	1113
1996	31	4	32	17	1170
1999	26	6	14	10	1183
2002	45	2	31	17	1127
2005	46	5	19	17	772
2008	35	2	27	6	925
Faversham	Baptisms	Receptions	Confirmations	Marriages	Mass Attendance
1993	19	0	0	8	350
1996	29	5	23	8	267
1999	18	1	0	3	295
2002	16	0	13	1	315
2005	20	0	1	7	253
2008	23	1	14	4	287

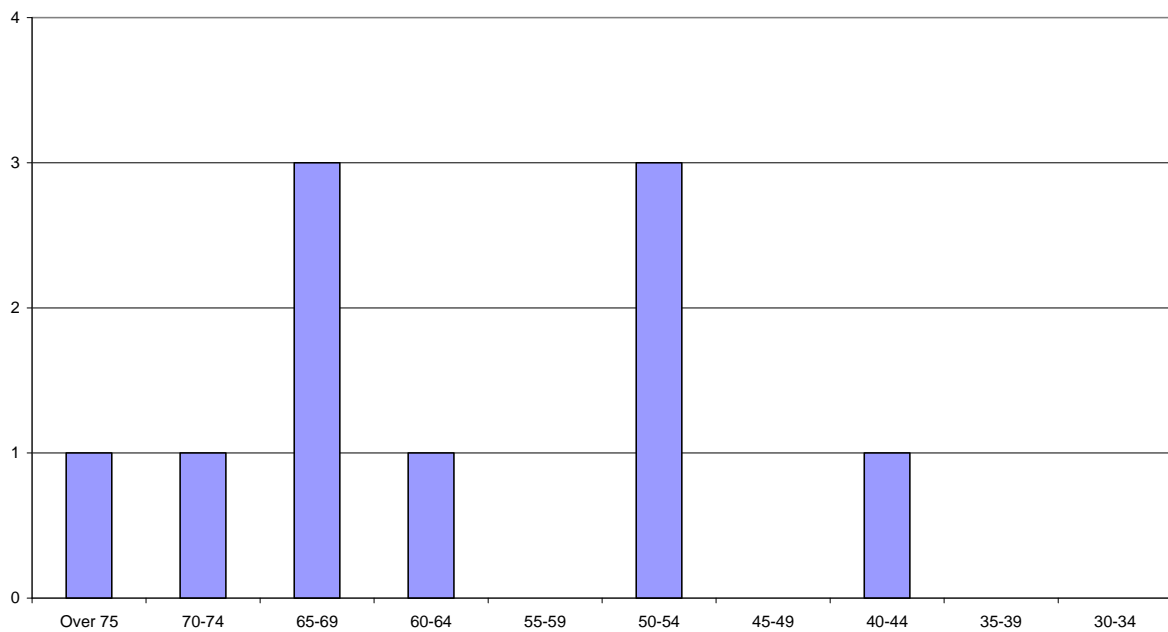
Herne Bay	Baptisms	Receptions	Confirmations	Marriages	Mass Attendance
1993	41	6	38	9	685
1996	27	1	2	5	515
1999	39	1	8	7	464
2002	23	1	0	5	455
2005	21	2	2	7	395
2008	27	0	3	4	408
Hersden	Baptisms	Receptions	Confirmations	Marriages	Mass Attendance
1993	4	1	10	0	90
1996	2	0	0	1	90
1999	4	0	9	0	104
2002	2	0	0	0	82
2005	2	0	4	0	75
2008	0	0	0	0	75
Whitstable	Baptisms	Receptions	Confirmations	Marriages	Mass Attendance
1993	23	5	36	11	560
1996	26	4	3	5	527
1999	20	7	40	3	519
2002	28	1	0	5	501
2005	39	6	24	7	548
2008	26	4	2	8	474

Chatham Deanery

Clergy Provision

	1993	2008
Parishes in Deanery	9	9
Parishes served by Diocesan Clergy	8	9
Parishes served by Religious	1	0
Parishes served by Secular Clergy of other dioceses	0	0
Diocesan Clergy appointed as Assistants	4	0
Priests from Religious Orders/Other Diocese as Assistants in Diocesan Parishes	1	1
Priests serving as dedicated Chaplains	0	1
Number of Parishes with Deacons	1	8
Number of Deacons in the Deanery	2	9
Number of Listed Churches in the Deanery	Not available	1

Chatham Deanery - Diocesan Priests by Age Group



Summary of Sacramental Figures

	1993	2008
Baptisms	347	273
Receptions	26	24
Confirmations	175	87
Marriages	103	37
Mass Attendance	4855	3115

Sacramental Figures in Detail

Chatham	Baptisms	Receptions	Confirmations	Marriages	Mass Attendance
1993	58	2	0	14	659
1996	58	3	21	13	674
1999	44	7	25	15	615
2002	43	4	17	11	549
2005	49	3	17	8	672
2008	44	5	17	8	605
Gillingham	Baptisms	Receptions	Confirmations	Marriages	Mass Attendance
1993	56	4	32	15	712
1996	27	1	24	2	440
1999	36	2	21	6	393
2002	26	0	19	2	327
2005	31	0	18	1	384
2008	42	0	15	4	376
Parkwood & Wigmore	Baptisms	Receptions	Confirmations	Marriages	Mass Attendance
1993	21	4	0	10	310
1996	15	0	16	1	301
1999	11	1	0	6	219
2002	7	1	12	0	201
2005	8	0	8	3	173
2008	10	0	8	2	175
Rainham	Baptisms	Receptions	Confirmations	Marriages	Mass Attendance
1993	38	1	21	17	756
1996	36	2	23	20	740
1999	49	2	16	9	636
2002	29	0	21	8	552
2005	29	3	17	12	545
2008	40	3	6	7	548

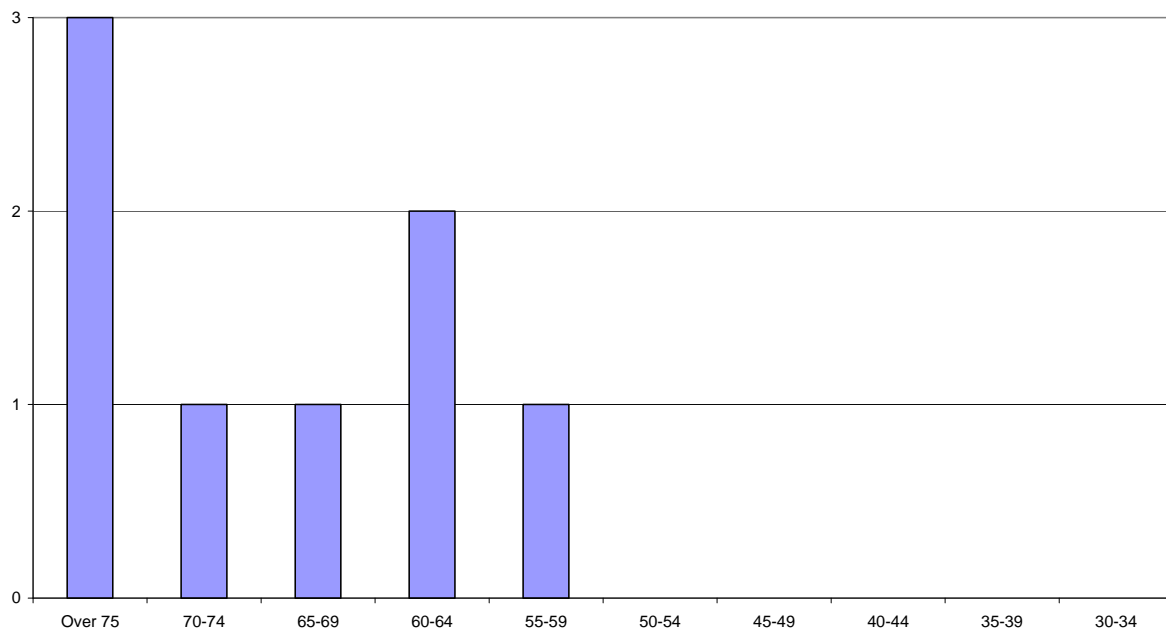
Rochester	Baptisms	Receptions	Confirmations	Marriages	Mass Attendance
1993	17	1	0	12	226
1996	16	1	12	4	190
1999	32	0	9	1	194
2002	21	6	10	4	194
2005	16	0	0	4	232
2008	14	1	1	5	217
Sheppey	Baptisms	Receptions	Confirmations	Marriages	Mass Attendance
1993	12	6	33	10	360
1996	19	0	0	4	274
1999	16	1	2	4	251
2002	14	2	0	3	196
2005	44	5	12	2	238
2008	21	6	0	4	244
Sittingbourne	Baptisms	Receptions	Confirmations	Marriages	Mass Attendance
1993	30	1	23	5	552
1996	19	0	33	4	409
1999	20	5	29	7	405
2002	37	1	18	8	376
2005	24	0	14	2	401
2008	29	3	17	3	330
Strood	Baptisms	Receptions	Confirmations	Marriages	Mass Attendance
1993	61	6	38	12	750
1996	38	0	28	12	592
1999	44	1	34	6	512
2002	37	0	19	8	446
2005	29	1	13	7	422
2008	47	0	23	2	380
Walderslade	Baptisms	Receptions	Confirmations	Marriages	Mass Attendance
1993	54	1	28	8	530
1996	35	1	21	5	476
1999	14	1	0	3	346
2002	21	1	20	6	268
2005	0	2	0	4	273
2008	26	6	0	2	240

Dover Deanery

Clergy Provision

	1993	2008
Parishes in Deanery	8	8
Parishes served by Diocesan Clergy	7	6
Parishes served by Religious	1	2
Parishes served by Secular Clergy of other dioceses	0	0
Diocesan Clergy appointed as Assistants	0	2
Priests from Religious Orders/Other Diocese as Assistants in Diocesan Parishes	0	0
Priests serving as dedicated Chaplains	1	0
Number of Parishes with Deacons	1	3
Number of Deacons in the Deanery	1	4
Number of Listed Churches in the Deanery	Not available	1

Dover Deanery - Diocesan Clergy by Age Group



Summary of Sacramental Figures

	1993	2008
Baptisms	195	115
Receptions	18	13
Confirmations	88	79
Marriages	40	23
Mass Attendance	3095	1958

Sacramental Figures in Detail

Aylesham	Baptisms	Receptions	Confirmations	Marriages	Mass Attendance
1993	15	1	1	1	147
1996	10	1	2	0	128
1999	15	0	8	1	116
2002	13	0	0	0	119
2005	7	0	4	6	128
2008	14	1	7	3	128
Buckland	Baptisms	Receptions	Confirmations	Marriages	Mass Attendance
1993	13	1	0	3	250
1996	9	0	5	3	251
1999	21	1	8	5	200
2002	22	1	17	1	200
2005	21	0	11	6	200
2008	29	0	11	4	200
Deal	Baptisms	Receptions	Confirmations	Marriages	Mass Attendance
1993	24	0	0	3	371
1996	10	0	0	7	322
1999	16	0	2	7	288
2002	9	1	5	2	296
2005	10	2	2	2	258
2008	7	0	2	1	175
Dover	Baptisms	Receptions	Confirmations	Marriages	Mass Attendance
1993	40	2	22	9	480
1996	47	4	0	12	501
1999	35	5	25	8	500
2002	27	3	20	7	493
2005	14	0	0	4	294
2008	6	0	13	7	288

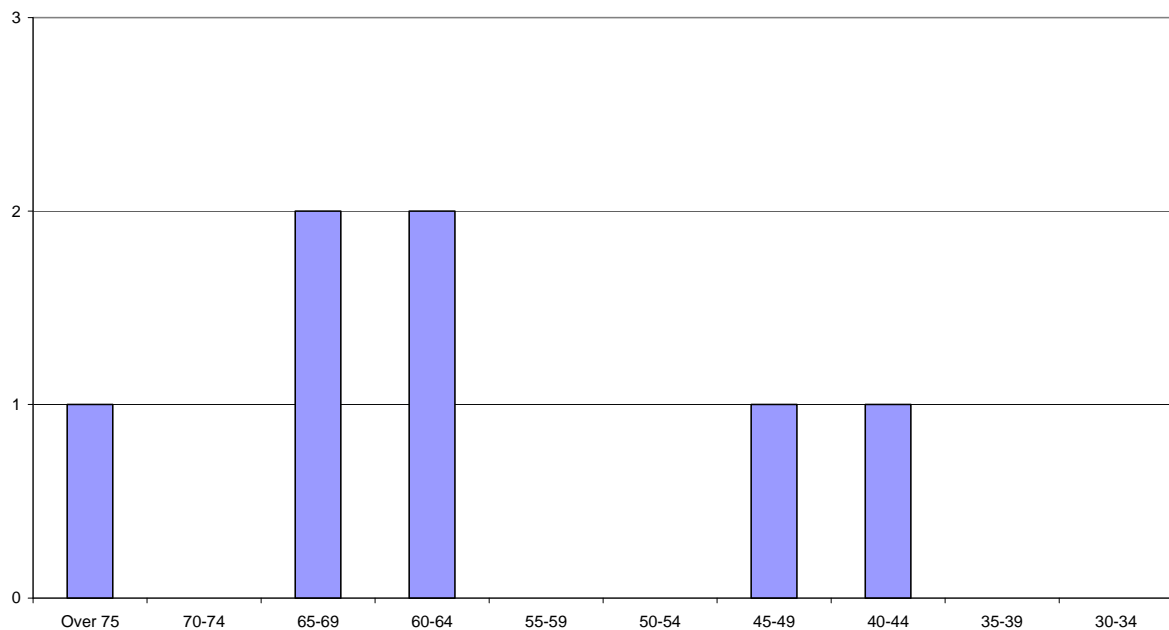
Folkestone	Baptisms	Receptions	Confirmations	Marriages	Mass Attendance
1993	34	8	27	9	500
1996	31	4	23	5	470
1999	51	7	22	8	414
2002	35	8	28	5	403
2005	40	7	26	6	389
2008	22	2	21	4	380
Folkestone West	Baptisms	Receptions	Confirmations	Marriages	Mass Attendance
1993	17	1	7	4	334
1996	17	3	0	2	223
1999	10	0	4	3	199
2002	15	0	9	3	159
2005	20	1	0	6	162
2008	5	3	3	2	146
Hythe	Baptisms	Receptions	Confirmations	Marriages	Mass Attendance
1993	40	5	31	8	707
1996	39	6	29	4	598
1999	2	6	24	9	581
2002	21	1	13	6	506
2005	25	6	16	3	551
2008	22	6	12	2	472
Mongeham	Baptisms	Receptions	Confirmations	Marriages	Mass Attendance
1993	12	0	0	3	306
1996	18	1	10	2	193
1999	7	0	0	1	179
2002	12	2	3	1	160
2005	6	0	1	0	175
2008	10	1	10	0	169

Gravesend Deanery

Clergy Provision

	1993	2008
Parishes in Deanery	7	7
Parishes served by Diocesan Clergy	7	6
Parishes served by Religious	0	0
Parishes served by Secular Clergy of other dioceses	0	1
Diocesan Clergy appointed as Assistants	2	1
Priests from Religious Orders/Other Diocese as Assistants in Diocesan Parishes	0	1
Priests serving as dedicated Chaplains	0	0
Number of Parishes with Deacons	3	4
Number of Deacons in the Deanery	3	4
Number of Listed Churches in the Deanery	Not available	5

Gravesend Deanery - Diocesan Priests by Age Group



Summary of Sacramental Figures

	1993	2008
Baptisms	264	257
Receptions	22	15
Confirmations	43	140
Marriages	90	32
Mass Attendance	3533	2850

Sacramental Figures in Detail

Dartford	Baptisms	Receptions	Confirmations	Marriages	Mass Attendance
1993	49	6	6	12	739
1996	35	2	40	8	732
1999	51	3	4	12	717
2002	45	1	34	9	698
2005	29	3	34	7	578
2008	48	3	23	6	585
Dartford St. Vincent	Baptisms	Receptions	Confirmations	Marriages	Mass Attendance
1993	39	0	0	18	380
1996	48	1	0	7	400
1999	57	4	24	9	379
2002	41	1	28	8	410
2005	52	3	21	3	415
2008	48	1	22	4	423
Gravesend	Baptisms	Receptions	Confirmations	Marriages	Mass Attendance
1993	101	1	0	29	933
1996	95	5	28	19	920
1999	82	6	47	11	728
2002	93	4	37	15	816
2005	98	5	37	15	824
2008	105	10	55	13	828
Hartley	Baptisms	Receptions	Confirmations	Marriages	Mass Attendance
1993	35	2	33	11	521
1996	26	3	22	8	445
1999	21	1	23	6	502
2002	18	6	15	11	501
2005	26	4	11	11	500
2008	16	0	11	3	286

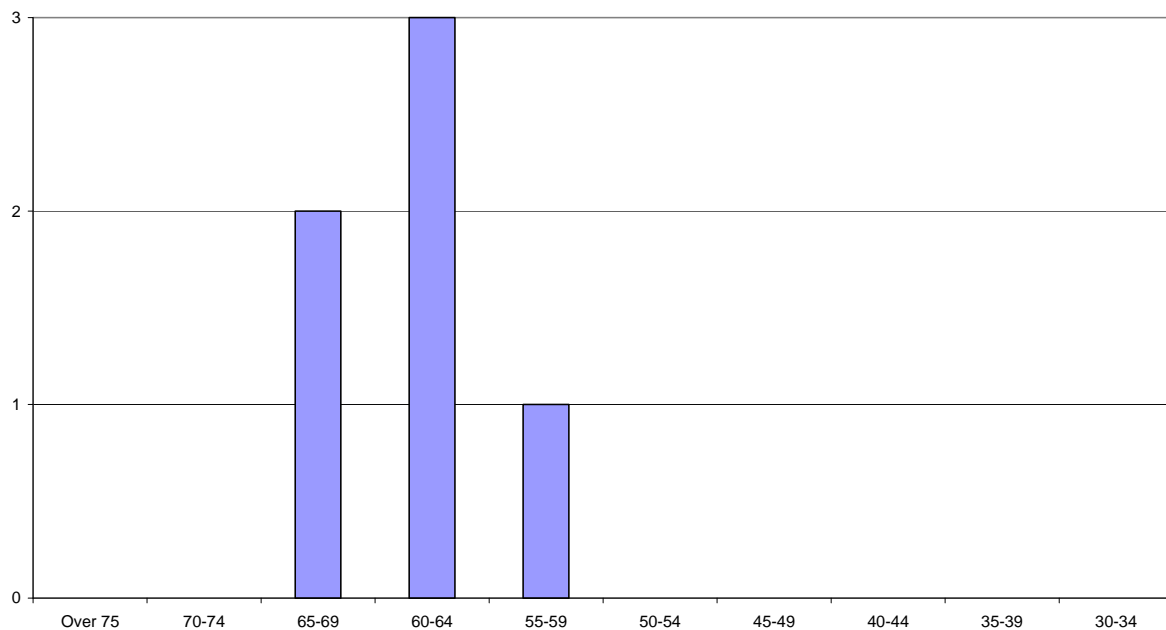
Meopham	Baptisms	Receptions	Confirmations	Marriages	Mass Attendance
1993	6	0	0	2	175
1996	7	1	0	1	209
1999	4	1	0	0	204
2002	3	0	0	0	212
2005	3	2	4	2	204
2008	6	0	0	2	201
Northfleet	Baptisms	Receptions	Confirmations	Marriages	Mass Attendance
1993	29	4	4	5	230
1996	37	1	1	3	264
1999	17	5	14	1	324
2002	8	0	10	0	213
2005	12	0	0	1	240
2008	17	0	13	2	273
Swanley	Baptisms	Receptions	Confirmations	Marriages	Mass Attendance
1993	46	9	0	13	555
1996	34	4	0	5	480
1999	19	1	1	4	380
2002	15	0	31	2	343
2005	18	0	0	1	275
2008	17	1	16	2	254

Maidstone Deanery

Clergy Provision

	1993	2008
Parishes in Deanery	7	7
Parishes served by Diocesan Clergy	7	6
Parishes served by Religious	0	0
Parishes served by Secular Clergy of other dioceses	0	1
Diocesan Clergy appointed as Assistants	2	0
Priests from Religious Orders/Other Diocese as Assistants in Diocesan Parishes	0	2
Priests serving as dedicated Chaplains	1	0
Number of Parishes with Deacons	2	3
Number of Deacons in the Deanery	3	4
Number of Listed Churches in the Deanery	Not available	1 (The Friars)

Maidstone Deanery - Diocesan Priests by Age Group



Summary of Sacramental Figures

	1993	2008
Baptisms	166	135
Receptions	16	14
Confirmations	84	53
Marriages	51	23
Mass Attendance	2771	2142

Sacramental Figures in Detail

Bearsted & Harrietsham	Baptisms	Receptions	Confirmations	Marriages	Mass Attendance
1993	18	1	19	3	263
1996	21	2	0	4	271
1999	10	5	22	2	254
2002	14	2	0	3	246
2005	7	0	8	4	198
2008	4	0	6	3	174
Cranbrook	Baptisms	Receptions	Confirmations	Marriages	Mass Attendance
1993	17	0	8	2	291
1996	6	1	8	0	302
1999	5	0	0	1	235
2002	8	1	10	1	178
2005	10	0	9	0	129
2008	8	0	0	1	121
Goudhurst	Baptisms	Receptions	Confirmations	Marriages	Mass Attendance
1993	11	0	5	4	185
1996	10	0	4	1	188
1999	4	0	0	1	164
2002	5	0	0	3	172
2005	6	0	0	4	170
2008	5	0	0	5	174
Maidstone	Baptisms	Receptions	Confirmations	Marriages	Mass Attendance
1993	70	8	28	21	967
1996	67	5	22	16	941
1999	59	2	34	22	1172
2002	73	2	18	7	805
2005	63	7	9	10	834
2008	66	6	35	8	908

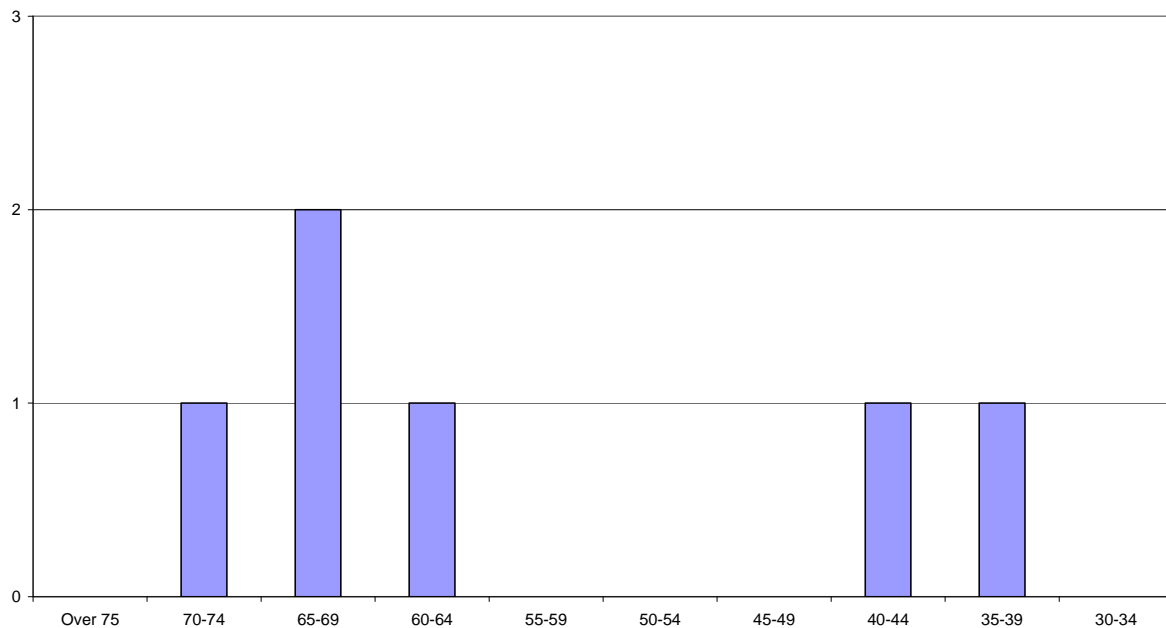
Maidstone South	Baptisms	Receptions	Confirmations	Marriages	Mass Attendance
1993	13	0	19	4	436
1996	13	0	0	0	426
1999	21	23	2	3	286
2002	19	0	0	3	258
2005	6	3	0	2	285
2008	18	4	0	0	262
Tenterden	Baptisms	Receptions	Confirmations	Marriages	Mass Attendance
1993	3	3	3	2	172
1996	5	0	2	3	163
1999	7	1	0	1	160
2002	2	0	0	2	135
2005	6	0	0	0	139
2008	1	1	1	2	158
West Malling	Baptisms	Receptions	Confirmations	Marriages	Mass Attendance
1993	34	4	2	15	457
1996	43	5	34	6	432
1999	37	0	0	3	406
2002	23	1	15	5	408
2005	32	7	8	1	373
2008	33	3	11	4	345

Thanet Deanery

Clergy Provision

	1993	2008
Parishes in Deanery	9	6
Parishes served by Diocesan Clergy	7	6
Parishes served by Religious	2	0
Parishes served by Secular Clergy of other dioceses	0	0
Diocesan Clergy appointed as Assistants	0	0
Priests from Religious Orders/Other Diocese as Assistants in Diocesan Parishes	0	0
Priests serving as dedicated Chaplains	0	0
Number of Parishes with Deacons	2	2
Number of Deacons in the Deanery	2	2
Number of Listed Churches in the Deanery	Not available	5 (including Minster Abbey and St. Augustine's Monastery)

Thanet Deanery - Diocesan Priests by Age Group



Summary of Sacramental Figures

	1993	2008
Baptisms	87	110
Receptions	13	12
Confirmations	67	38
Marriages	21	15
Mass Attendance	1991	1467

Sacramental Figures in Detail

Birchington	Baptisms	Receptions	Confirmations	Marriages	Mass Attendance
1993	4	0	0	1	168
1996	7	0	3	5	172
1999	7	5	10	3	173
2002	6	0	0	2	169
2005	2	0	5	0	154
2008	1	0	0	0	120
Broadstairs	Baptisms	Receptions	Confirmations	Marriages	Mass Attendance
1993	14	2	18	5	320
1996	5	1	0	5	264
1999	11	1	9	2	273
2002	22	3	3	6	328
2005	11	0	17	4	340
2008	25	1	1	5	335
Cliftonville	Baptisms	Receptions	Confirmations	Marriages	Mass Attendance
1993	13	0	4	3	286
1996	2	0	0	2	232
1999	19	3	5	1	195
2002	20	0	0	4	152
2005	12	0	0	1	136
2008	22	1	5	0	112
Margate	Baptisms	Receptions	Confirmations	Marriages	Mass Attendance
1993	15	0	3	0	307
1996	8	1	1	4	220
1999	9	1	10	0	172
2002	5	2	2	2	222
2005	19	2	11	2	283
2008	22	5	14	3	295

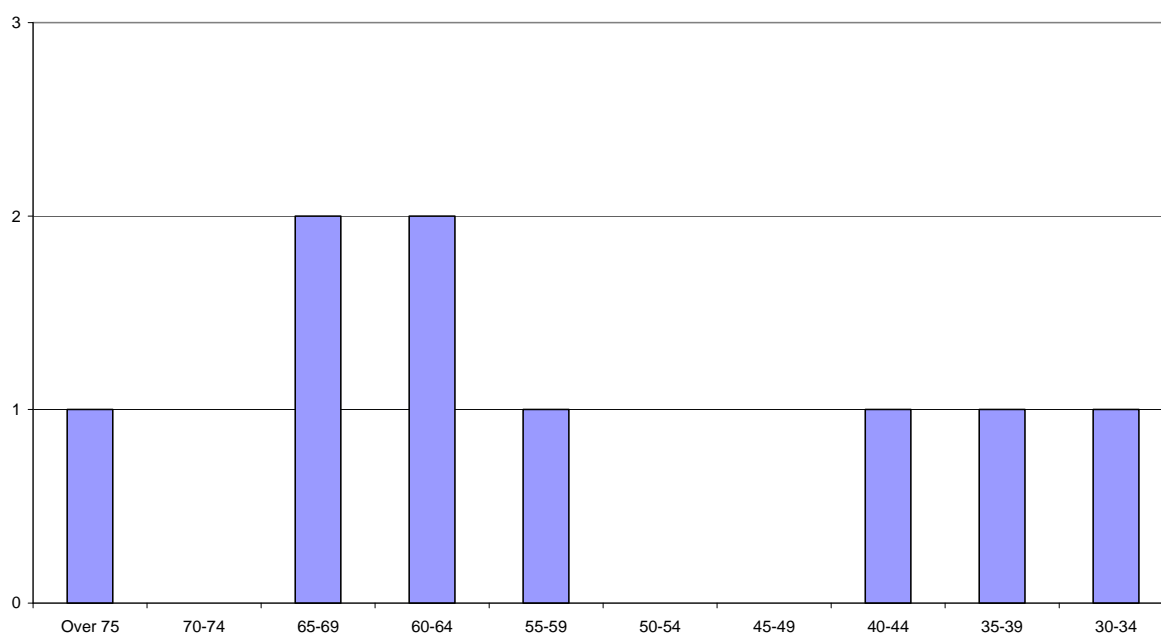
Minster	Baptisms	Receptions	Confirmations	Marriages	Mass Attendance
1993	3	1	0	1	61
1996	2	1	0	0	60
1999	2	0	0	0	60
2002	1	0	0	0	59
2005	0	0	0	0	52
2008	1	1	2	Church closed	
Ramsgate St. Augustine	Baptisms	Receptions	Confirmations	Marriages	Mass Attendance
1993	14	2	19	2	304
1996	12	2	19	3	232
1999	16	0	7	2	182
2002	9	1	2	3	169
2005	4	1	11	1	185
2008	13	0	0	1	150
Rasmgate St. Benedict	Baptisms	Receptions	Confirmations	Marriages	Mass Attendance
1993	0	0	0	0	95
1996	0	0	0	0	83
1999	0	0	0	0	76
2002	2	0	0	0	66
2005	0	0	0	0	64
2008	5	0	0	0	44
Rasmgate St. Ethelbert	Baptisms	Receptions	Confirmations	Marriages	Mass Attendance
1993	9	3	0	6	192
1996	13	3	5	3	223
1999	19	3	10	2	262
2002	24	4	11	6	255
2005	8	2	6	4	192
2008	16	2	6	3	240
Westgate	Baptisms	Receptions	Confirmations	Marriages	Mass Attendance
1993	15	5	23	3	258
1996	10	4	17	1	384
1999	10	2	10	1	197
2002	8	5	5	1	181
2005	8	0	0	4	178
2008	5	2	10	3	171

Tunbridge Wells Deanery

Clergy Provision

	1993	2008
Parishes in Deanery	7	7
Parishes served by Diocesan Clergy	7	7
Parishes served by Religious	0	0
Parishes served by Secular Clergy of other dioceses	0	0
Diocesan Clergy appointed as Assistants	3	2
Priests from Religious Orders/Other Diocese as Assistants in Diocesan Parishes	1	1
Priests serving as dedicated Chaplains	0	0
Number of Parishes with Deacons	2	3
Number of Deacons in the Deanery	3	3
Number of Listed Churches in the Deanery	Not available	0

Tunbridge Wells Deanery - Diocesan Priests by Age Group



Summary of Sacramental Figures

	1993	2008
Baptisms	179	198
Receptions	18	16
Confirmations	161	64
Marriages	36	27
Mass Attendance	3541	3196

Sacramental Figures in Detail

Edenbridge	Baptisms	Receptions	Confirmations	Marriages	Mass Attendance
1993	6	2	14	1	180
1996	4	0	7	3	210
1999	7	1	4	3	198
2002	4	1	0	2	161
2005	5	0	9	0	123
2008	2	0	7	3	129
Paddock Wood	Baptisms	Receptions	Confirmations	Marriages	Mass Attendance
1993	11	1	10	1	249
1996	14	1	12	2	231
1999	11	0	0	1	214
2002	11	1	6	2	210
2005	4	0	0	0	196
2008	9	1	1	0	204
Sevenoaks	Baptisms	Receptions	Confirmations	Marriages	Mass Attendance
1993	61	6	92	12	1013
1996	67	5	34	21	1082
1999	79	10	48	10	900
2002	65	0	27	8	907
2005	64	8	40	15	979
2008	63	0	25	6	906
Southborough	Baptisms	Receptions	Confirmations	Marriages	Mass Attendance
1993	17	0	11	2	243
1996	19	0	0	2	204
1999	15	2	3	3	220
2002	21	2	6	2	206
2005	10	2	2	3	181
2008	19	0	0	0	181

Tonbridge	Baptisms	Receptions	Confirmations	Marriages	Mass Attendance
1993	26	1	2	8	560
1996	26	5	35	13	617
1999	27	3	3	8	600
2002	21	5	16	6	565
2005	22	0	23	6	580
2008	28	5	9	7	562
Tunbridge Wells	Baptisms	Receptions	Confirmations	Marriages	Mass Attendance
1993	57	8	32	10	1180
1996	55	13	33	10	1156
1999	52	6	31	13	1273
2002	63	12	32	8	1296
2005	67	8	40	9	1101
2008	71	10	22	8	1092
Westerham	Baptisms	Receptions	Confirmations	Marriages	Mass Attendance
1993	1	0	0	2	116
1996	4	0	5	1	91
1999	6	0	10	2	112
2002	7	0	0	2	86
2005	16	0	7	2	106
2008	6	0	0	3	122

Figures for the Diocese

Summary of Sacramental Figures for the Diocese

	1993	2008
Baptisms	7052	6987
Receptions	468	463
Confirmations	3161	3215
Marriages	1633	822
Mass Attendance	104764	93775

Baptisms: A decline in numbers of 65 baptisms over a fifteen year period is small. In some areas of the diocese there has been a rise in numbers of baptisms and, where there has been a decline this is perhaps due to a general change in age group in the area concerned.

Marriages: While there has been a decline in the number of marriages taking place within the Diocese, more recent years have seen a significant growth in the number of people being prepared for marriage outside the Diocese. There remains, however, a decline in the number of marriages.

Mass Attendance: The 2008 figure reflects a slight upward trend in more recent years.

Clergy Provision

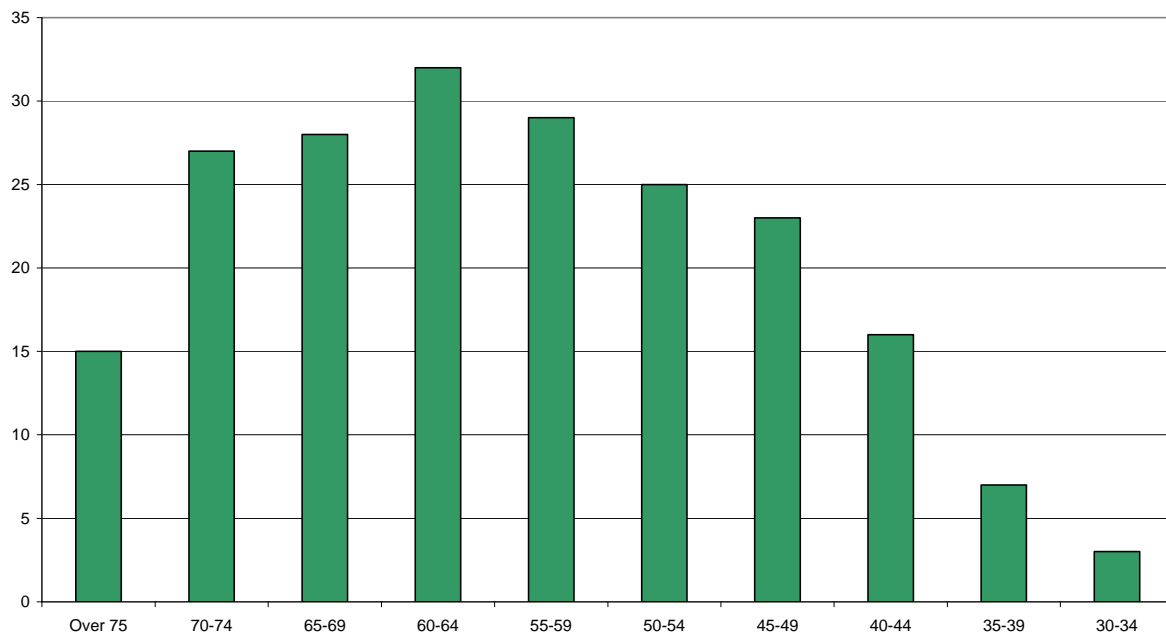
	1993	2008
Parishes in Diocese	185	182
Parishes served by Diocesan Clergy	165	147
Parishes served by Religious	20	30
Parishes served by Secular Clergy of other dioceses	0	5
Diocesan Clergy appointed as Assistants	47	22
Priests from Religious Orders/Other Diocese as Assistants in Diocesan Parishes	7	24
Priests serving as dedicated Chaplains	7	8
Number of Parishes with Deacons	40	53
Number of Deacons serving in the Diocese	47	62
Number of Listed Churches in the Diocese	Not available	42

Diocesan Priests

At present there are 290 Priests of the Diocese. The following table shows the age-ranges and their availability for ministry:

Age	Parish Priests	Assistant Priests	Chaplains and non-parochial ministry	Serving outside the Diocese	Sabbatical	Retired	Total
Over 75	12	3	0	0	0	41	56
70-74	24	0	1	2	0	16	42
65-69	25	2	1	1	0	4	33
60-64	23	4	1	3	1	0	32
55-59	23	2	3	0	1	0	29
50-54	16	1	2	4	1	0	25
45-49	12	3	4	2	2	0	23
40-44	9	5	2	0	0	0	17
35-39	3	2	1	0	1	0	7
30-34	0	1	1	0	0	0	2
Total	148	23	16	12	6	61	265

ACTIVE DIOCESAN PRIESTS BY AGE GROUP



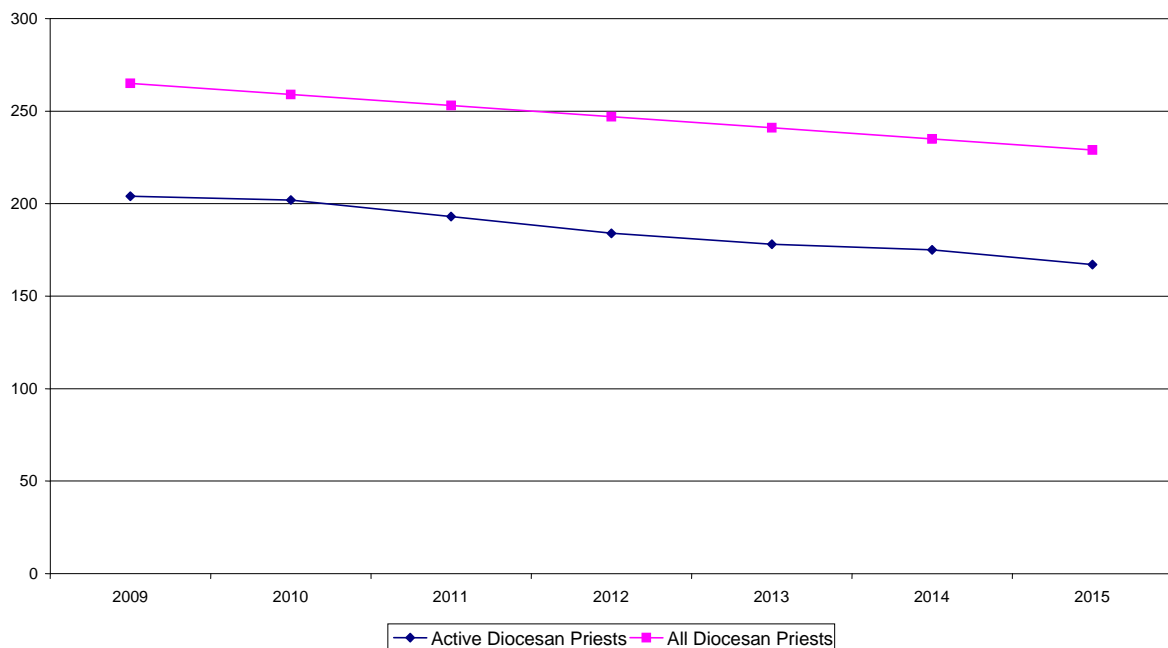
Future Projections

It is very difficult to predict the number of priests who will be available for active ministry in future years. The projection proposed here is based on the following considerations:

- That, on average, 6 priests over the age of 75 die each year.
- That, on average, 1 priest under the age of 75 die each year.
- That the trend for some 28% of priests over the age of 75 continue in active ministry for a number of years.
- That, on average, 2 priests under the age of 75 decide to retire each year.
- That, on average, 1 priest each year makes the decision to leave active ministry.
- That, on average, there will be 2 priests ordained for the Diocese each year.

Based on these considerations, it is possible to propose that, over the period from 2010 to 2015, the number of active diocesan priests will have declined from 204 to 167 – a decline of 37.

Projected numbers of Diocesan Priests



Priests from Other Dioceses and Religious Communities

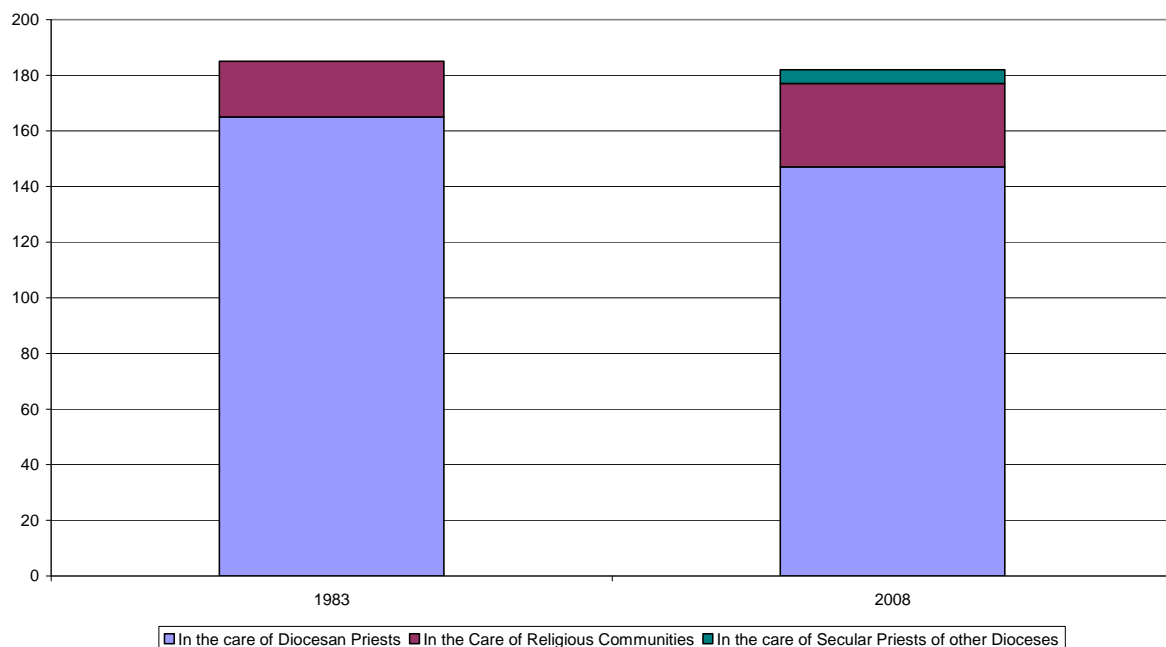
Recent years have seen an increase in the number of priests from Dioceses outside the United Kingdom coming to serve in the Diocese. Many of them come to the Diocese for agreed periods of time, perhaps three years. Some parishes have developed close links with Dioceses in other countries and these links have ensured the presence of assistant priests in those parishes.

Some priests come to the Diocese at the request of their own Bishops, since experience in another setting often brings many benefits to the Diocese of origin when the priest concerned returns home. Priests themselves will often wish to spend sabbatical leave serving on another Diocese. Priests who are studying in colleges and universities in this country will seek accommodation in return for assistance in the parish.

This growth has included a number of Religious Communities, notably the Missionary Society of St. Paul of Nigeria, the Missionary Society of St. Francis Xavier (Pillar Fathers), the West African Province of the Holy Ghost Fathers and the Vice Province of Nigeria of the Vincentian Fathers. Such communities are willing to make a long-term commitment to the Diocese and the ministry of their priests has forged very strong links indeed with the religious congregations concerned.

Furthermore, the decline in the number of Diocesan Priests available to serve as Assistant Priests has been mitigated by the presence of priests, both religious and secular, coming from other areas.

Care for Parishes - Comparison: 1993/2008



Assitant Priests in Diocesan Parishes - Comparison:1983/2008

